



DETERIORATION OF PUBLIC HEALTH DATA



45,503 homicides in 2019

Homicide rate of **21.7** per 100,000 people

↓ **22.1%** compared to 2018

But this reduction might not be real

↑ **35.2%** in violent deaths undefined cause

16,648 cases in 2019 alone

Between 2009 and 2019...

623,439 people were murdered

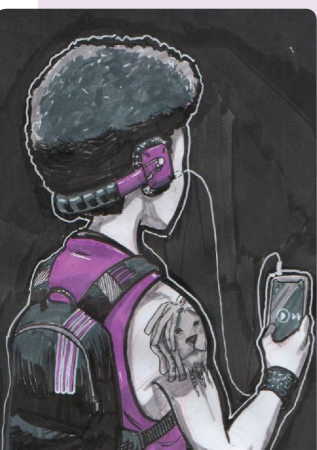
121,457 violent deaths with undetermined cause

A study by Cerqueira (2013) estimated that **73.9%** of these deaths are actual **HOMICIDES**

→ Total murders in the period may amount to **713,196**

LOST GENERATION

333,330 adolescents and young people murdered (15 to 29 years old) between 2009 and 2019



53% of victims of homicides in the period

LETHAL VIOLENCE AGAINST INDIGENOUS PEOPLE



2,074 indigenous people murdered between 2009 and 2019

Mortality rate grew **↑ 21.6%** during the period

Mortality rate among Indigenous in 2019 **18.3** per 100 thousand

Rates are higher in municipalities with indigenous lands

Municipalities with indigenous lands **20.4**

Municipalities without indigenous lands **7.7**

RACIAL INEQUALITY

77% of homicide victims in Brazil are black



The chances of a black person being murdered are **2.6x** higher than that of a non-black person

Homicide Rate

29.2 BLACK

11.2 NON-BLACK

Number of black people murdered **↑ 1.6%**

Number of non-black people murdered **↓ 33%**

VIOLENCE AGAINST PERSONS WITH DISABILITIES (PwD)



7,613 cases in 2019

Distribution of cases by type of disability

39.4% Intellectual Disability

30.2% Physical Disability

13.8% Multiple Disabilities

9.4% Visual Impairment

7.3% Hearing impairment

58.5% of cases are of **DOMESTIC** violence

Women are the majority of victims of violence living with any type of disability

Type	Rate per 10 thousand		
	Women	Men	Total
Intellectual Disability	56.9	21.9	36.2
Physical Disability	17.8	7.3	11.4
Hearing impairment	5	2.3	3.6
Visual Impairment	1.6	1.2	1.4

Children, adolescents and the elderly are the most vulnerable

0 to 9	8.8
10 to 19	19.4
20 to 29	13.6
30 to 39	13.0
40 to 49	11.6
50 to 59	9.4
60 or older	24.2

LGBTQI+

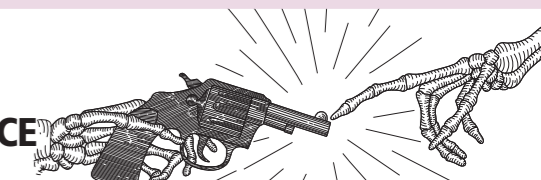
5,330 cases of violence against Homosexuals and Bisexuals



↑ **9.8%** in comparison to 2018

3,967 cases of physical violence against Trans and Transvestites people ↑ **5.6%** compared to 2018

ARMED VIOLENCE



439,160 firearm homicides in eleven years

70% of the country's murders between 2009 and 2019 were committed using firearms

Numbers of War

109 homicides committed with firearms per day since 2009

VIOLENCE AGAINST WOMEN



50,056 women murdered between 2009 and 2019

Number of **BLACK** women killed **↑ 2%** Number of **NON-BLACK** women killed **↓ 26.9%**

67% of homicide victims in 2019 were black

Decrease in urban violence, increase in domestic violence

↑ **6.1%** in the rate of women murdered at home

↓ **28.1%** in the rate of women murdered outside of their homes