

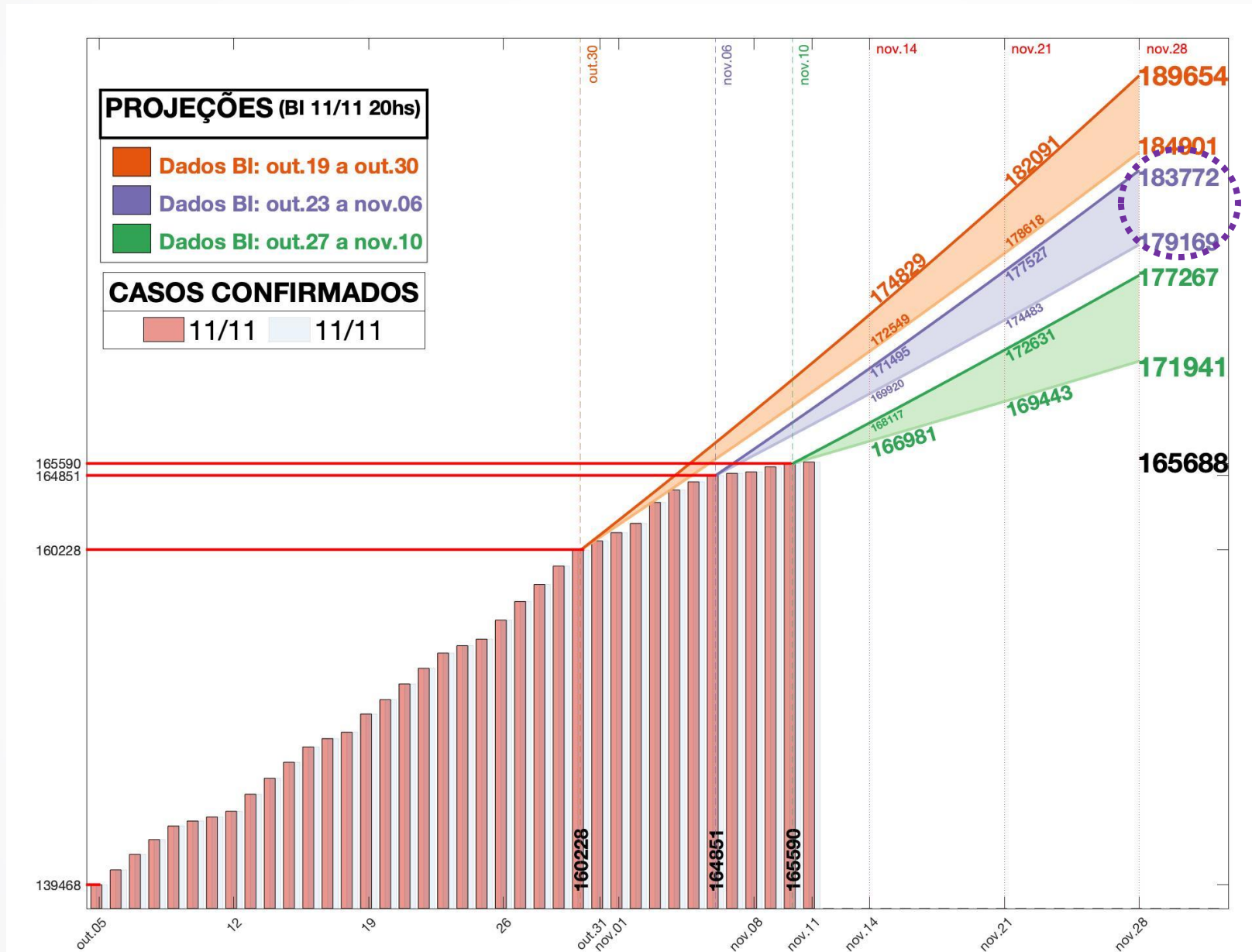
# Núcleo Interinstitucional de Estudos Epidemiológicos (NIEE/IJSN)

## Resenha: indicadores COVID-19

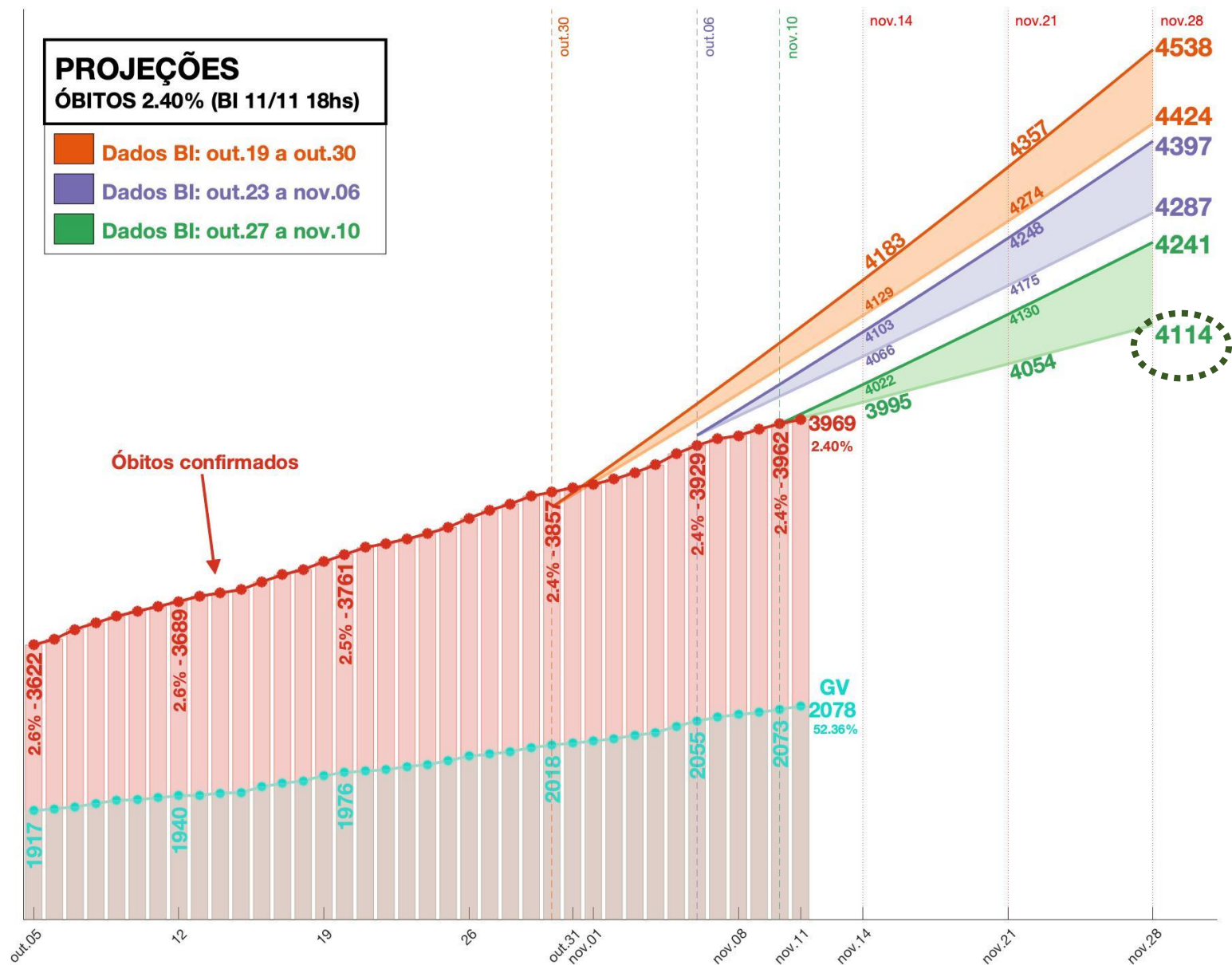
13 de novembro 2020



# Projeção dos casos COVID-19 Espírito Santo até 28/11

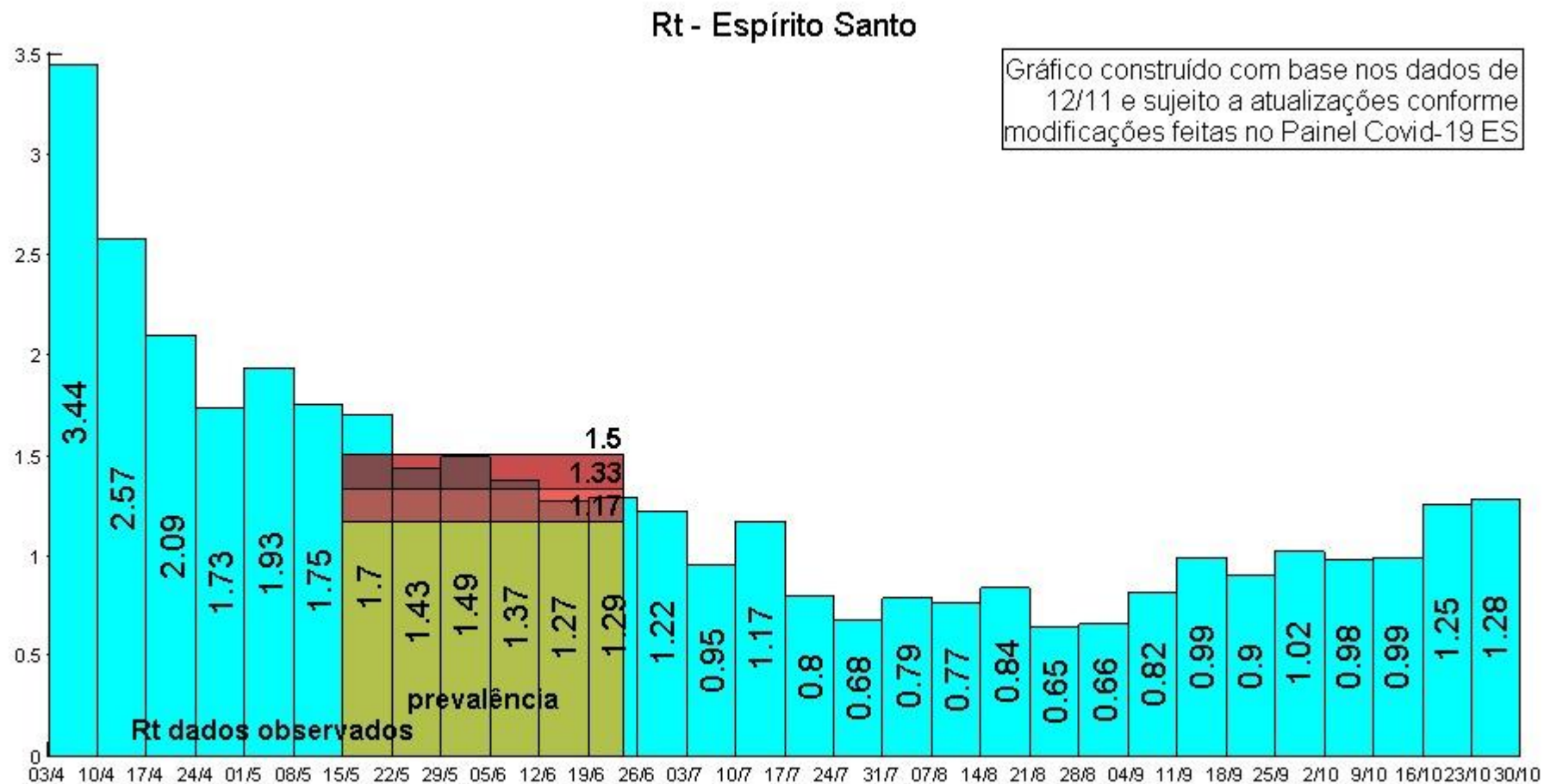


# Projeção da óbitos COVID-19 ES até 28/11

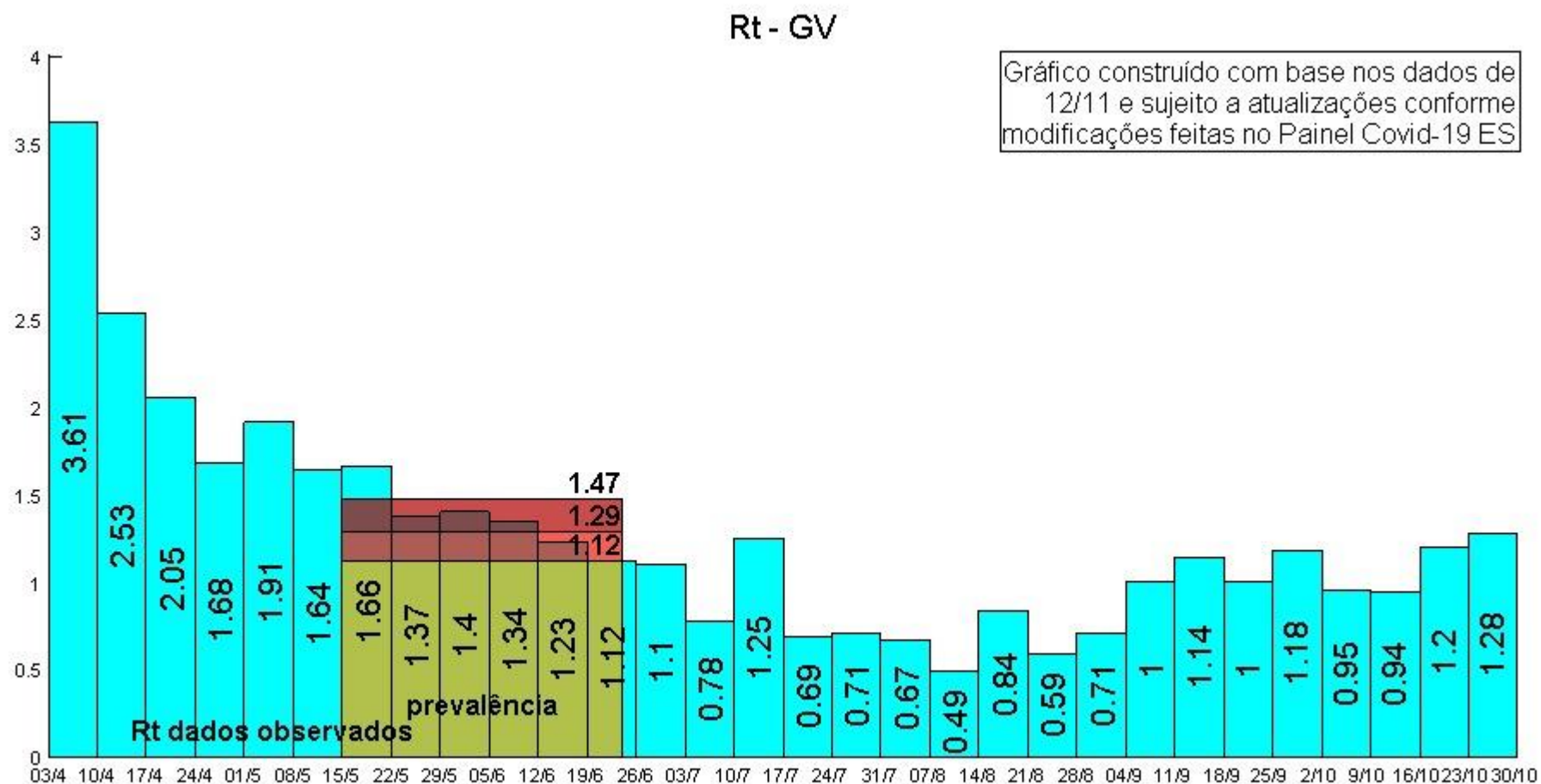




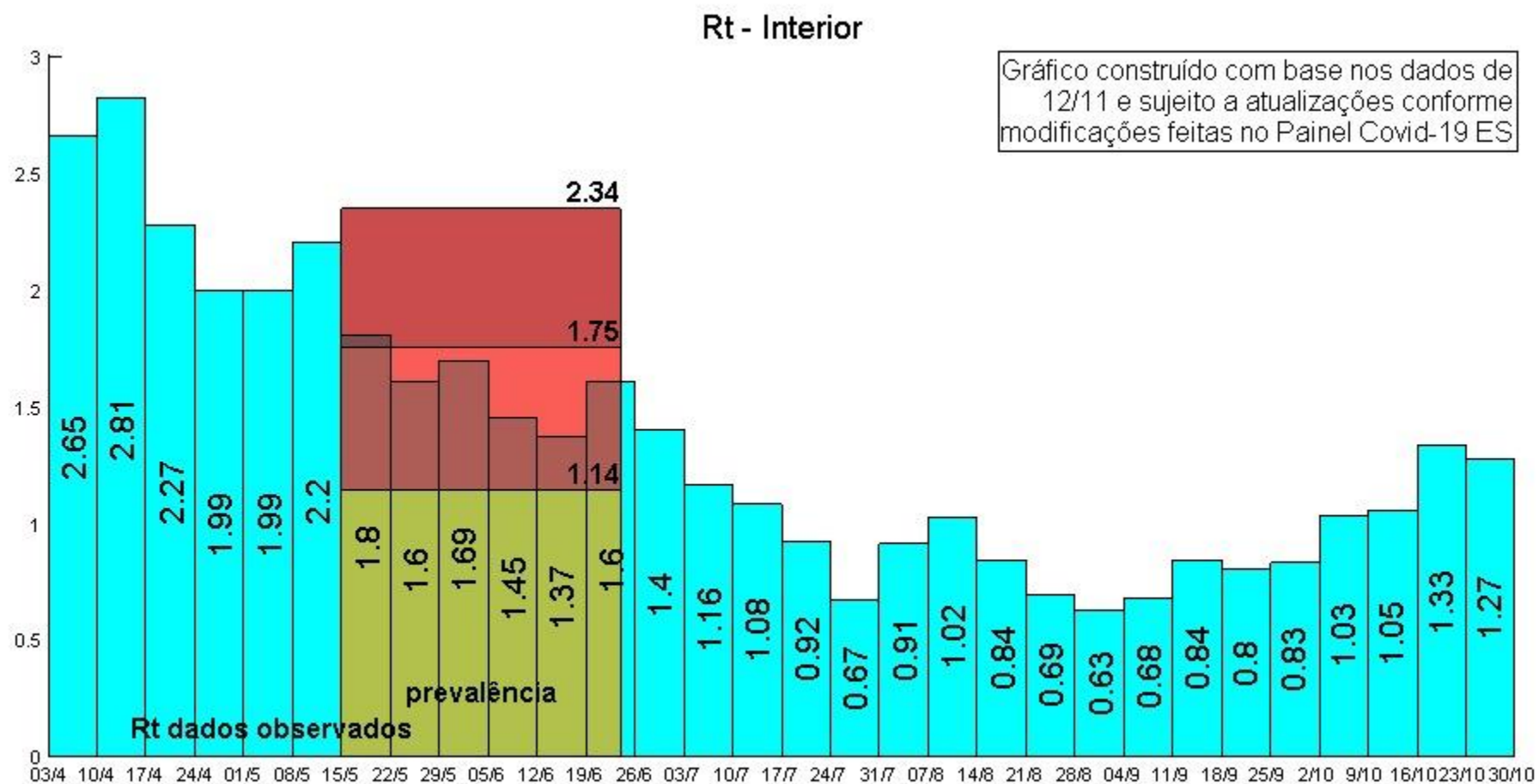
# Taxas de Transmissão



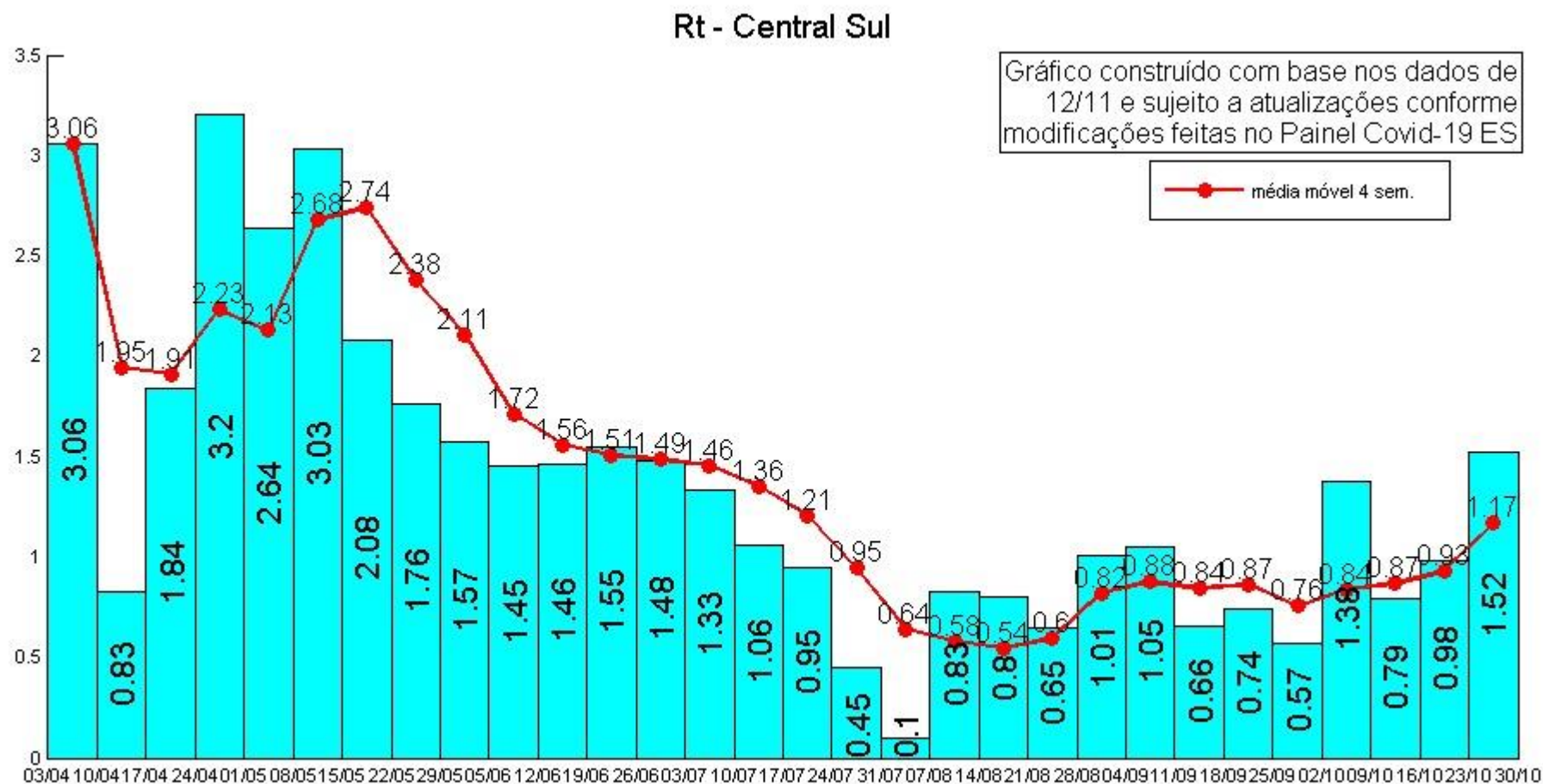
# Taxas de Transmissão



# Taxas de Transmissão



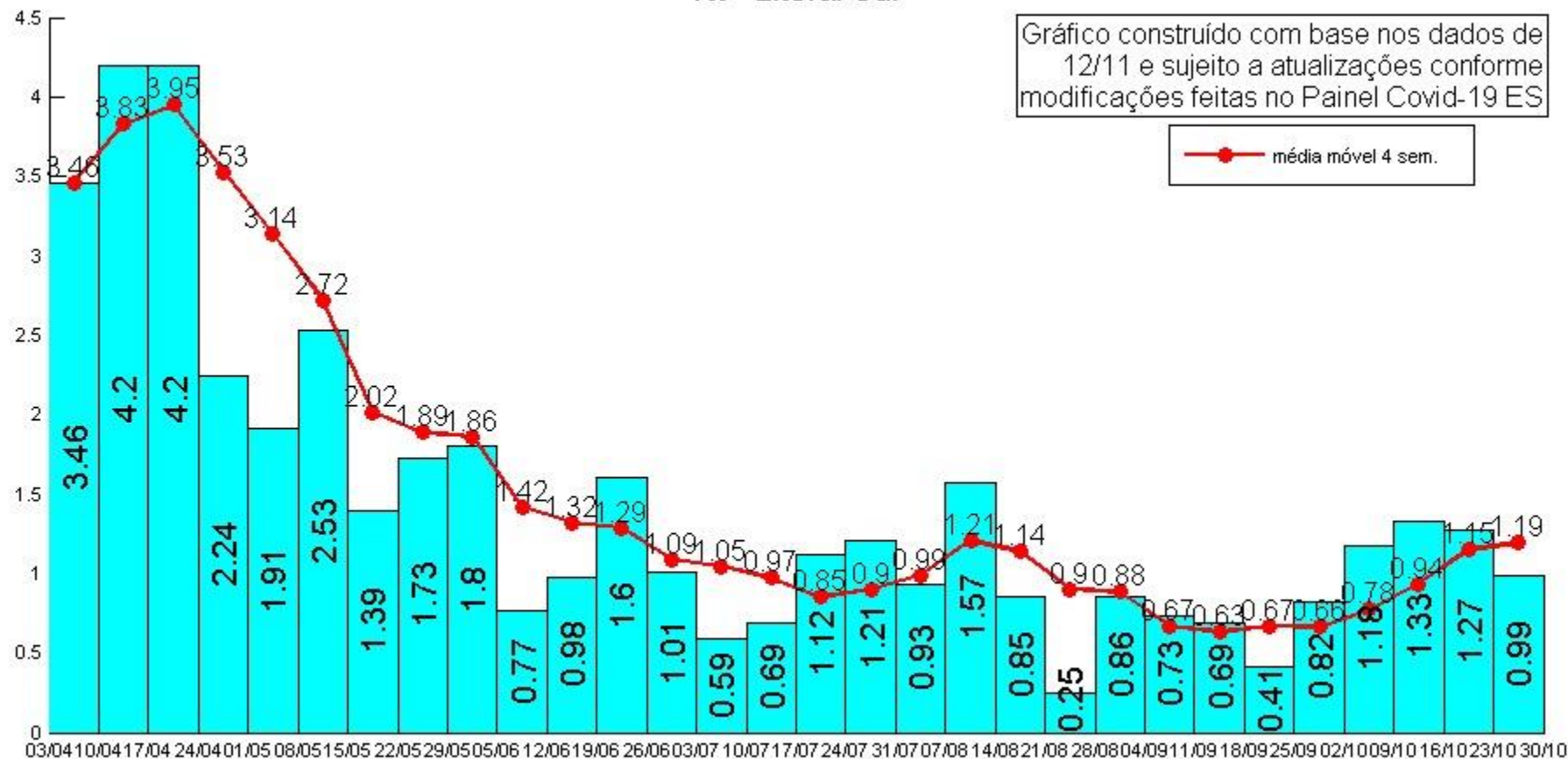
# Taxas de Transmissão





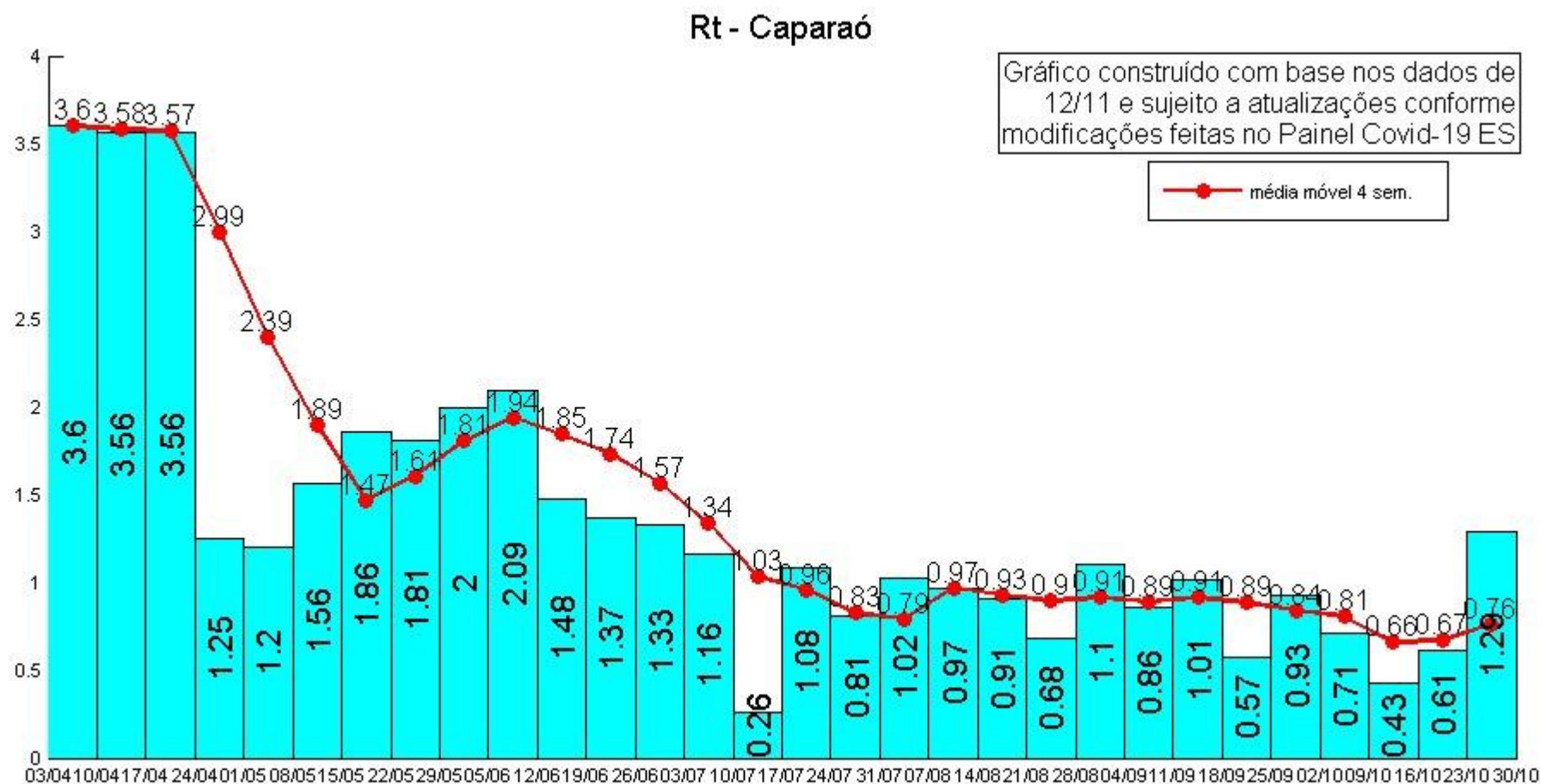
# Taxas de Transmissão

## Rt - Litoral Sul

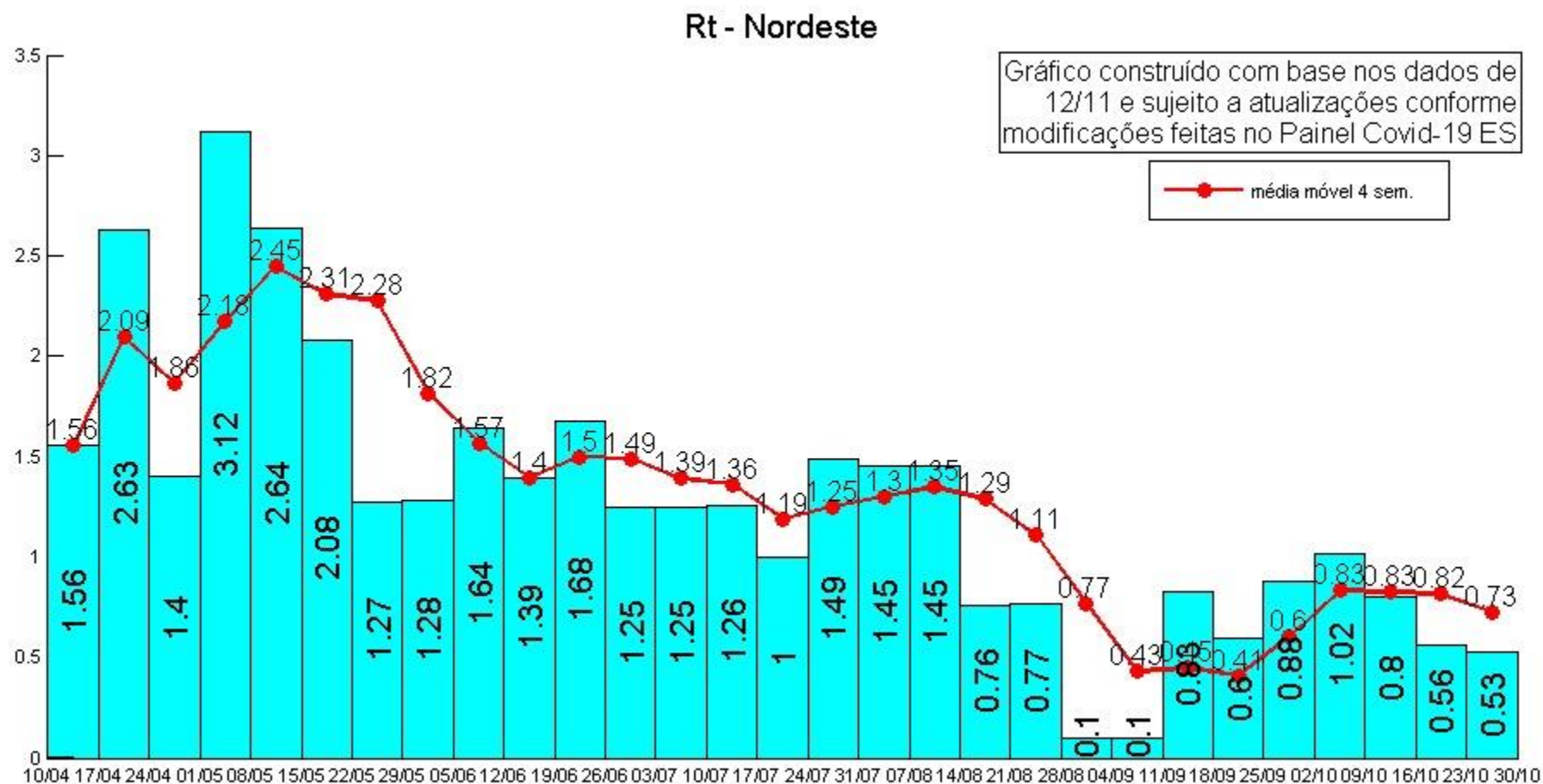




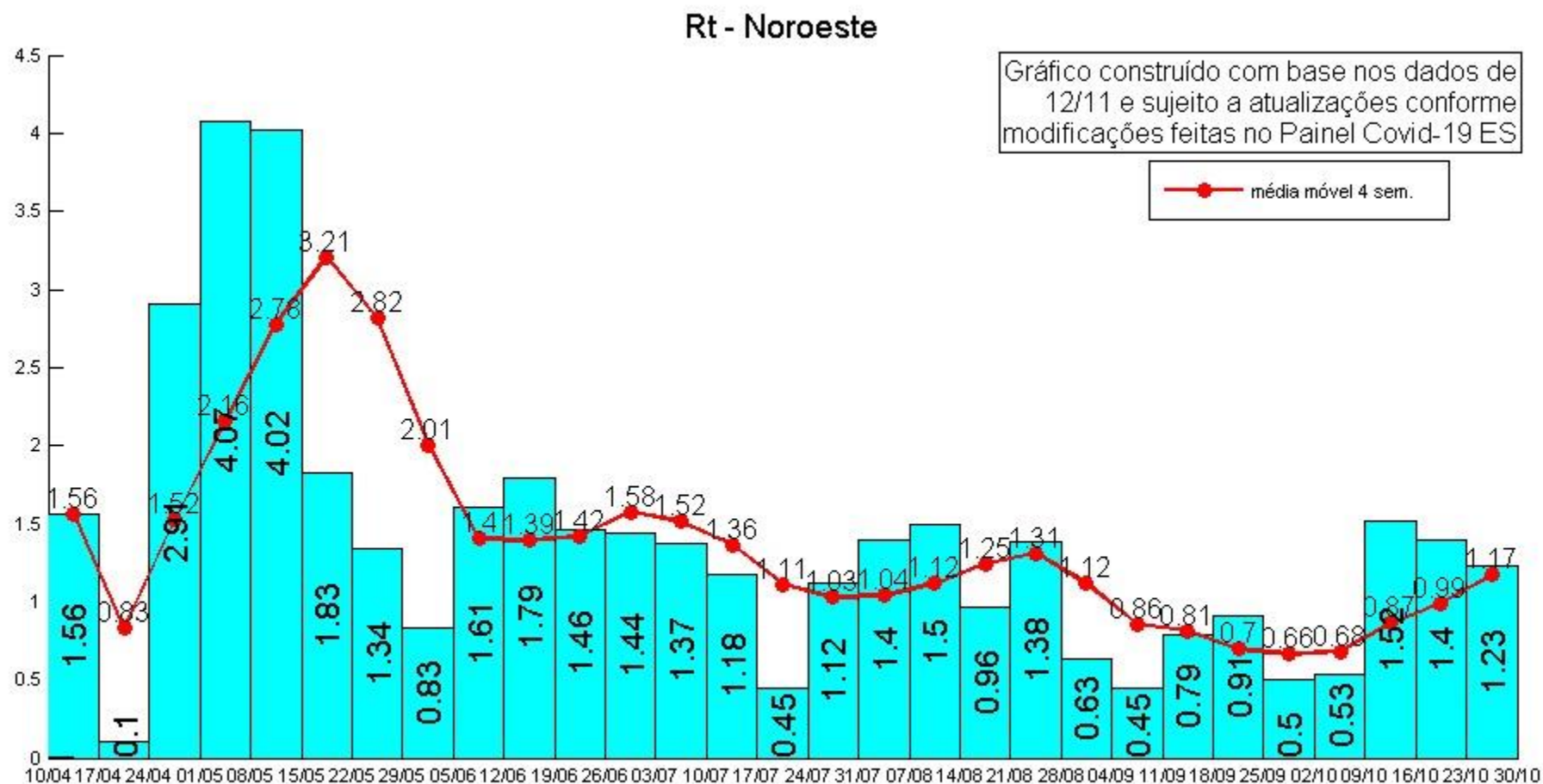
# Taxas de Transmissão



# Taxas de Transmissão

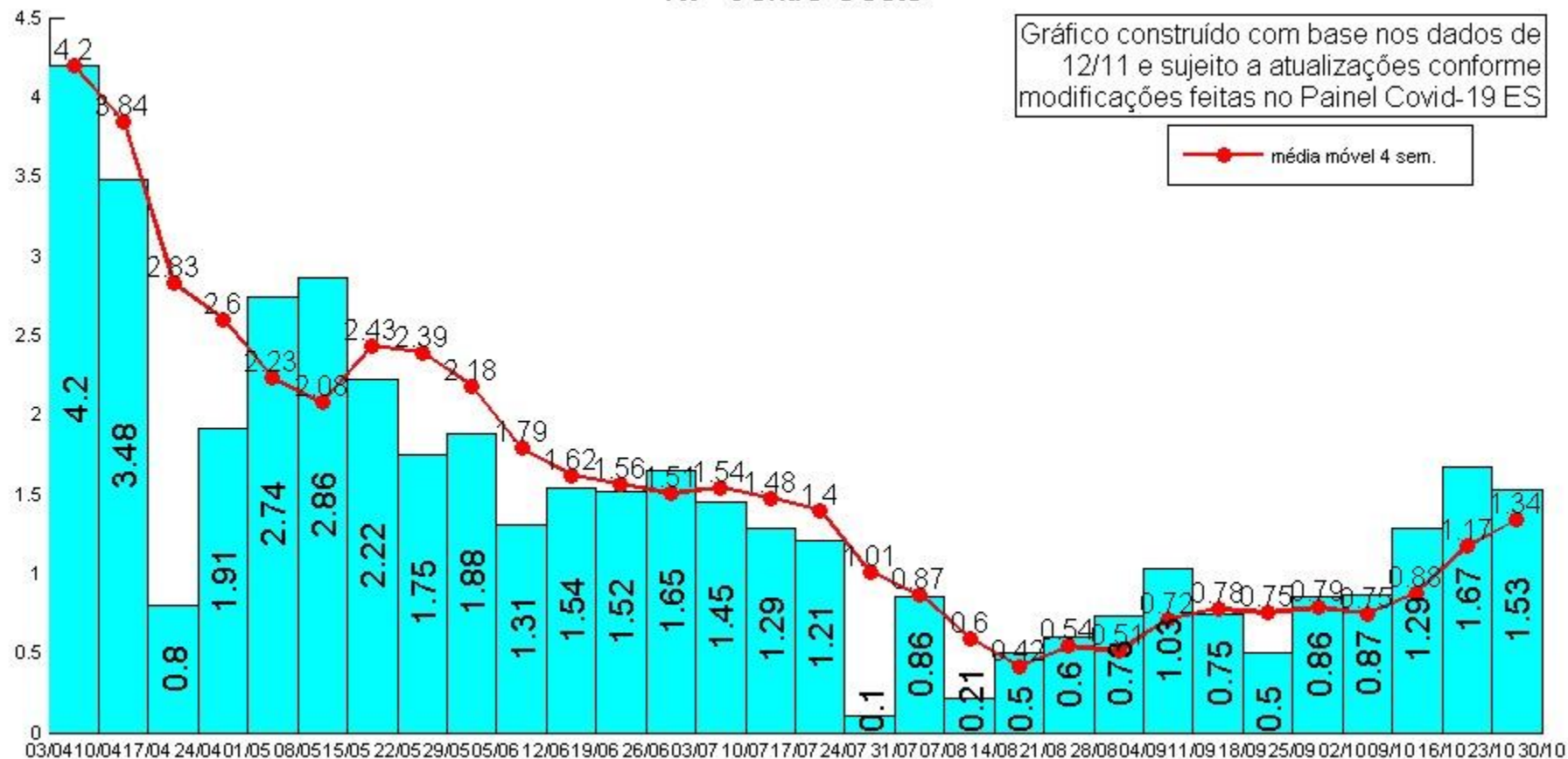


# Taxas de Transmissão



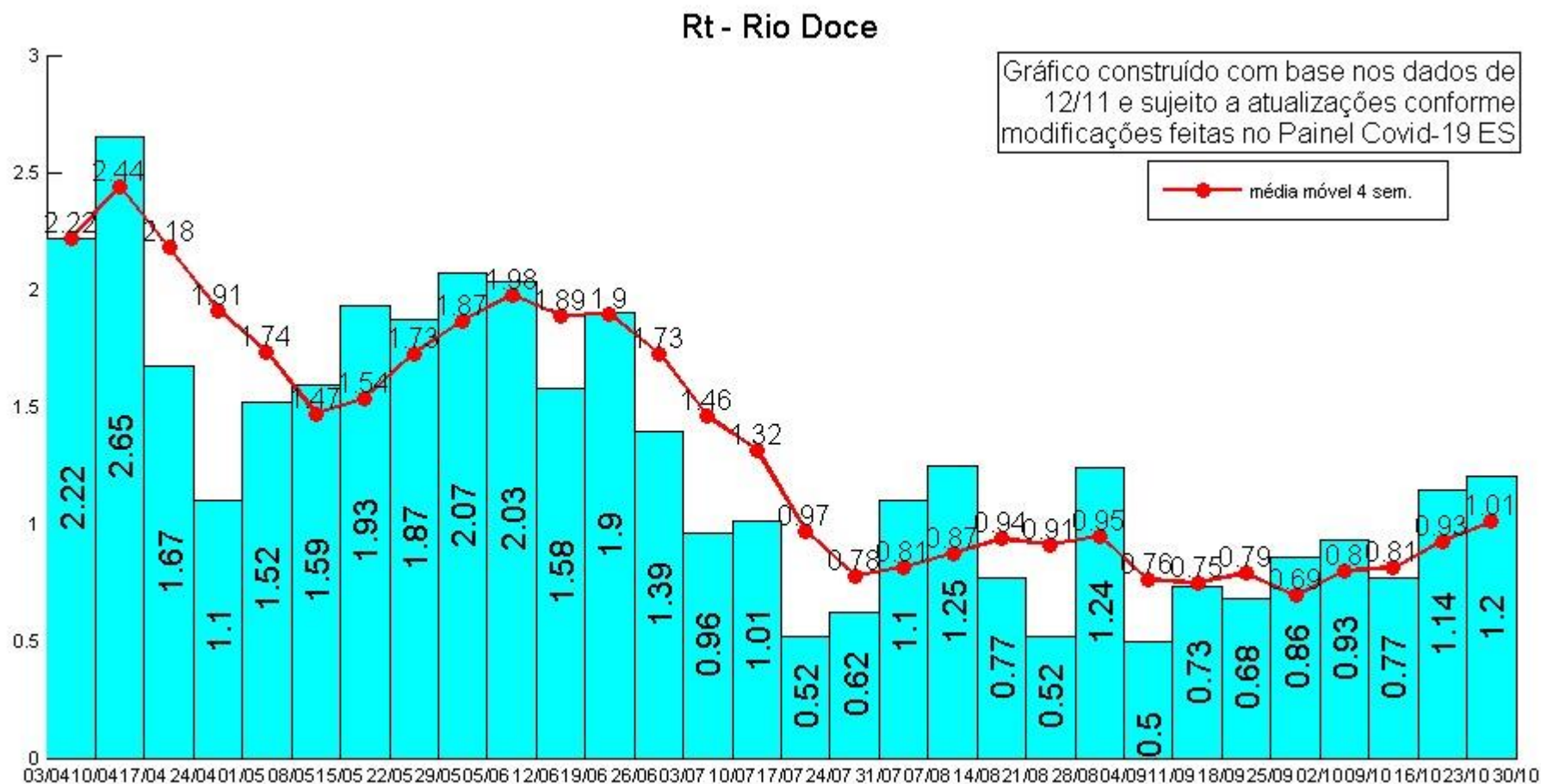
# Taxas de Transmissão

## Rt - Centro Oeste



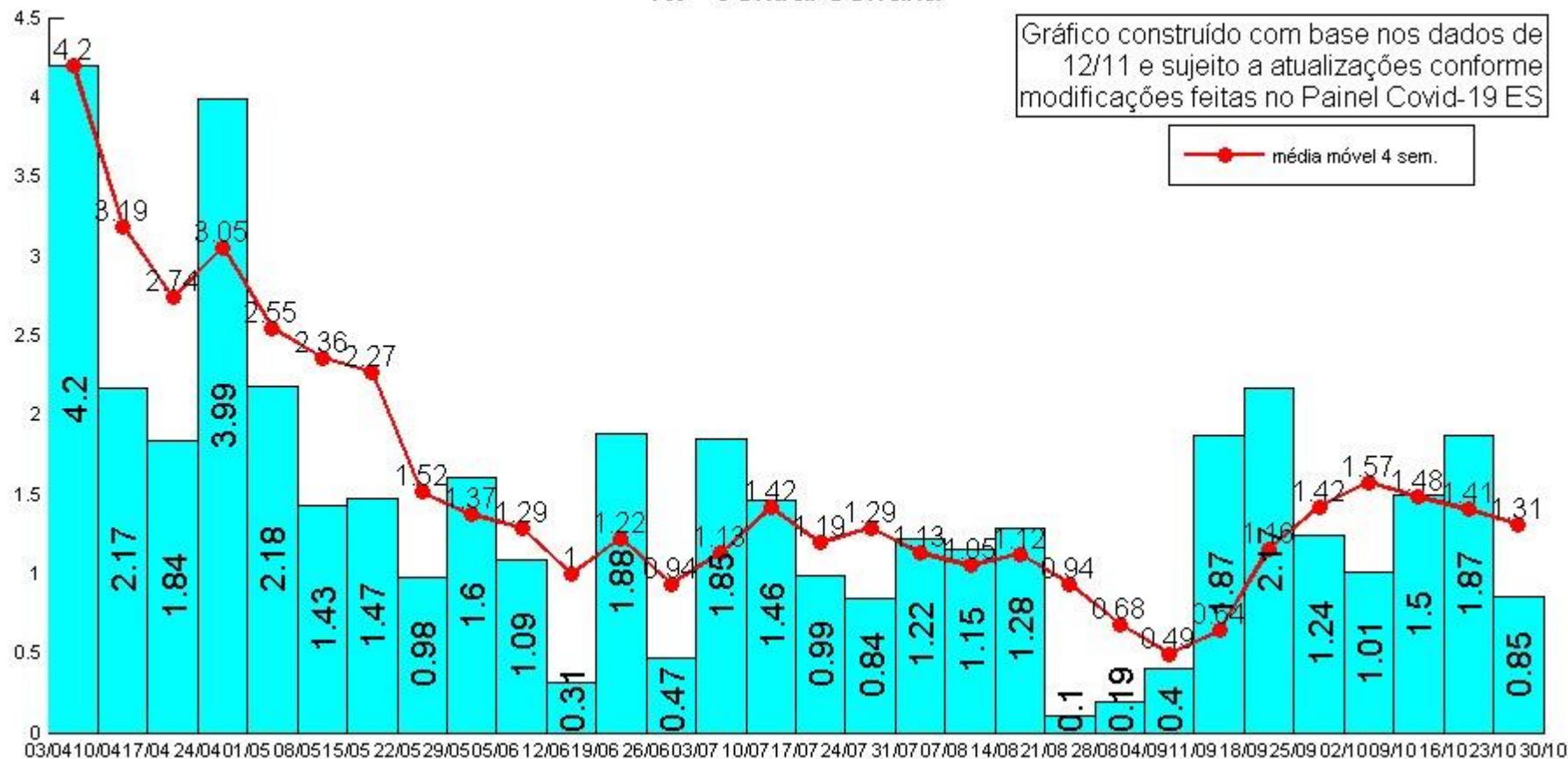


# Taxas de Transmissão

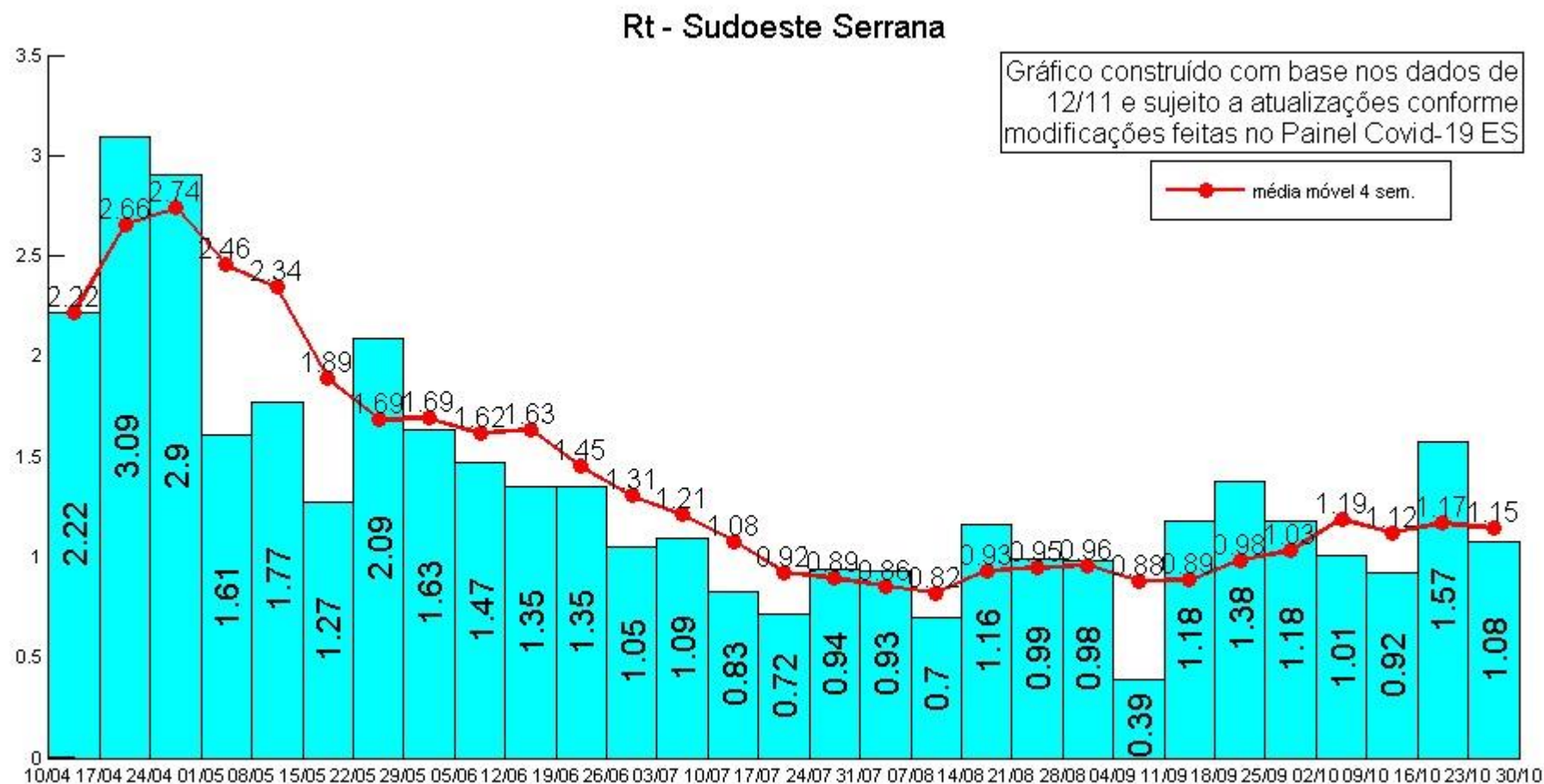


# Taxas de Transmissão

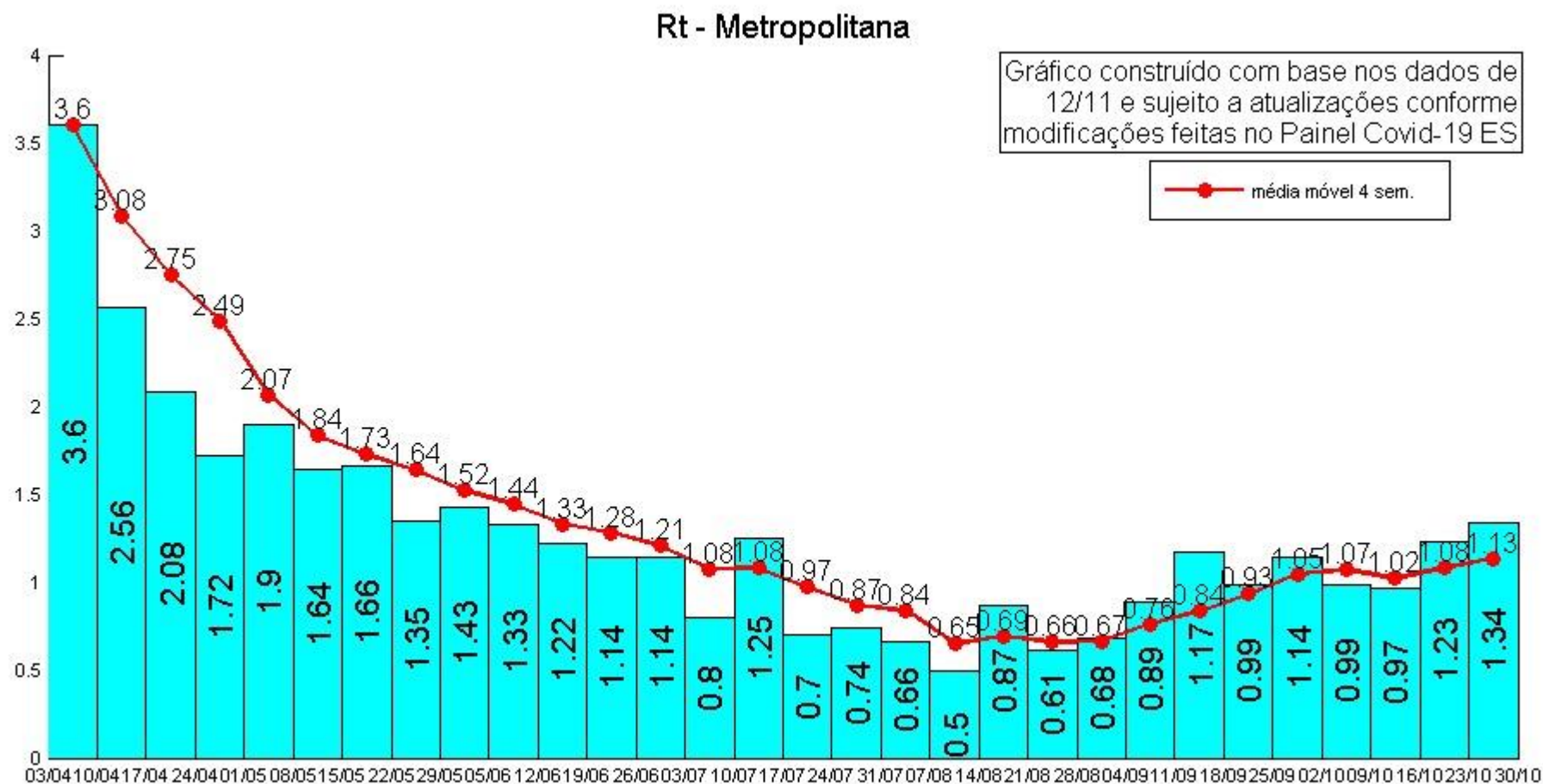
Rt - Central Serrana



# Taxas de Transmissão

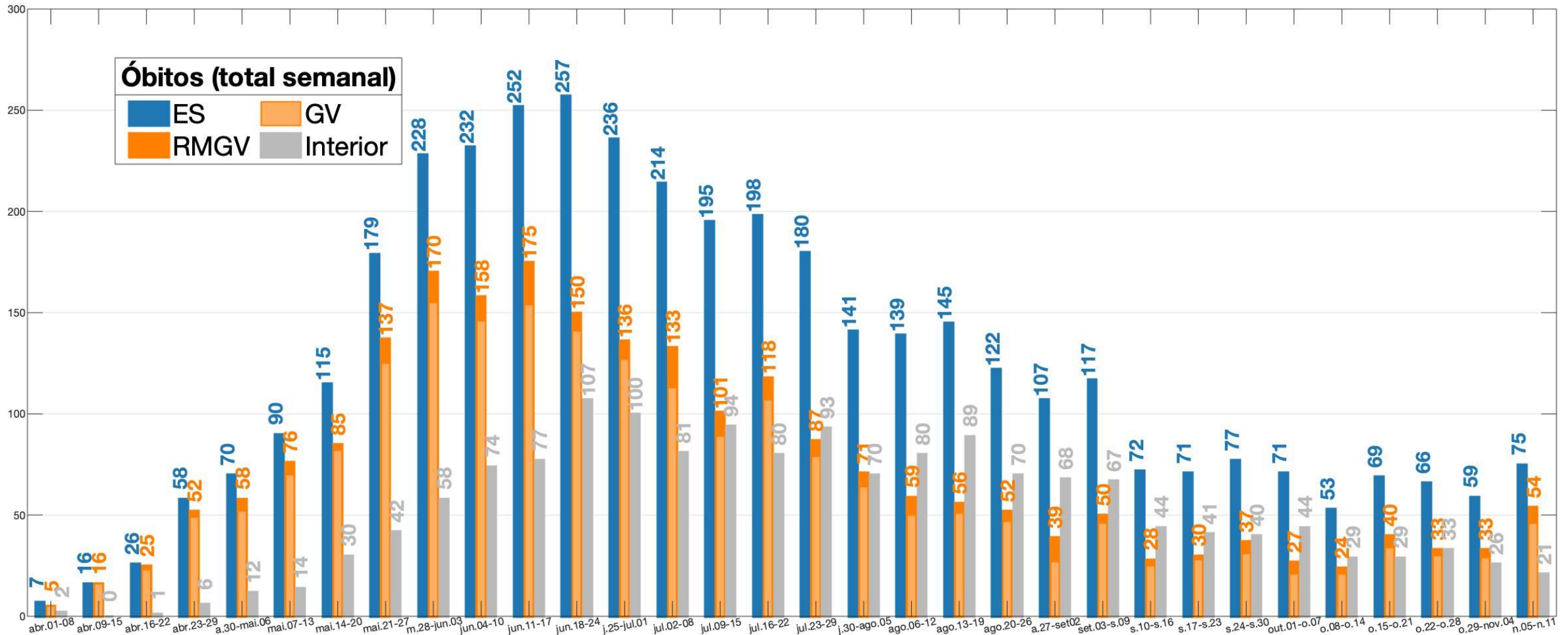


# Taxas de Transmissão



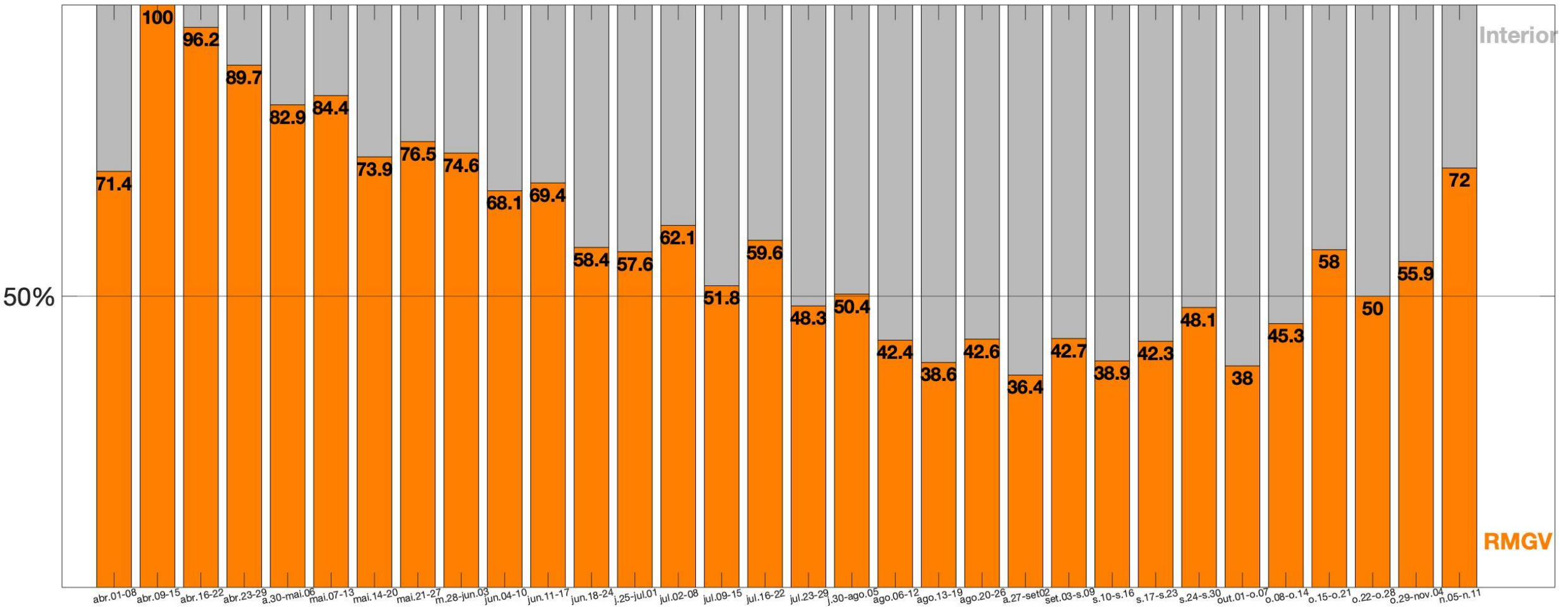
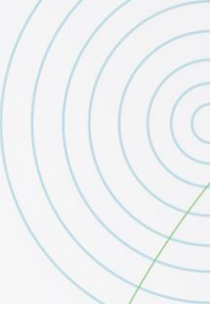


# Análises de tendências



# Análises de tendências

Percentual de óbitos na RMGV e interior (%)



# Análises de tendências

