

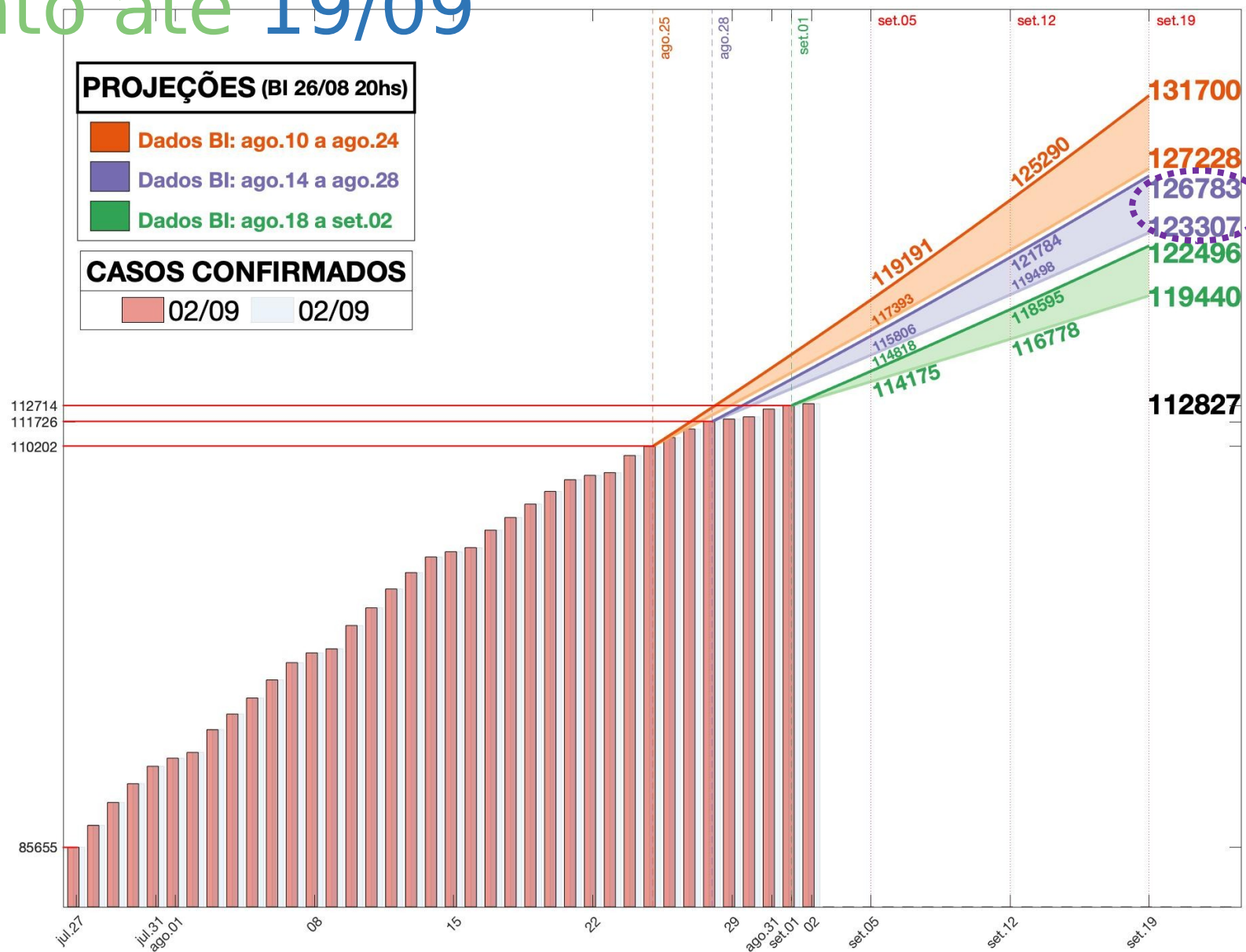
Núcleo Interinstitucional de Estudos Epidemiológicos (NIEE/IJSN)

Resenha: indicadores COVID-19

04 de setembro
2020

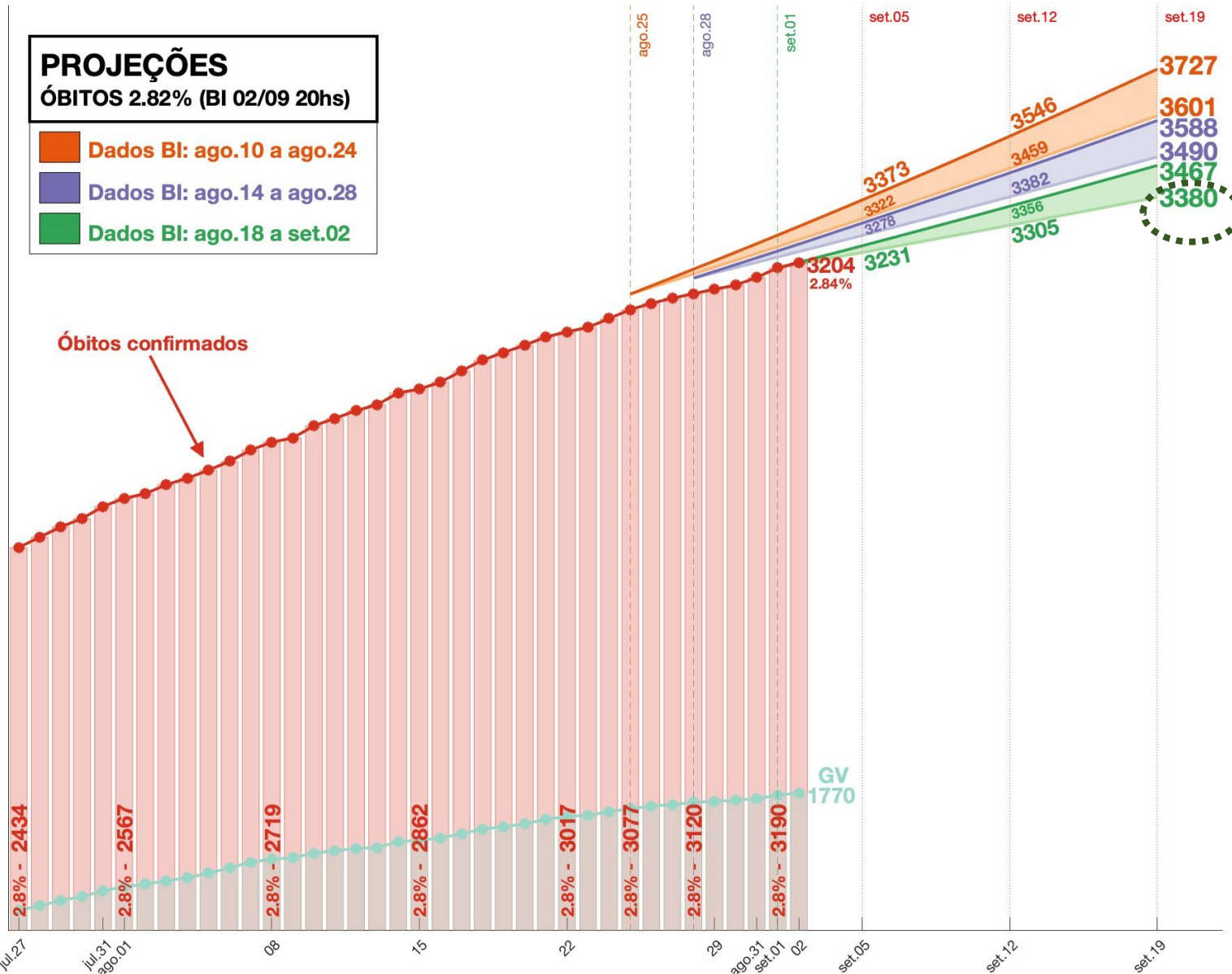


Projeção dos casos COVID-19 Espírito Santo até 19/09

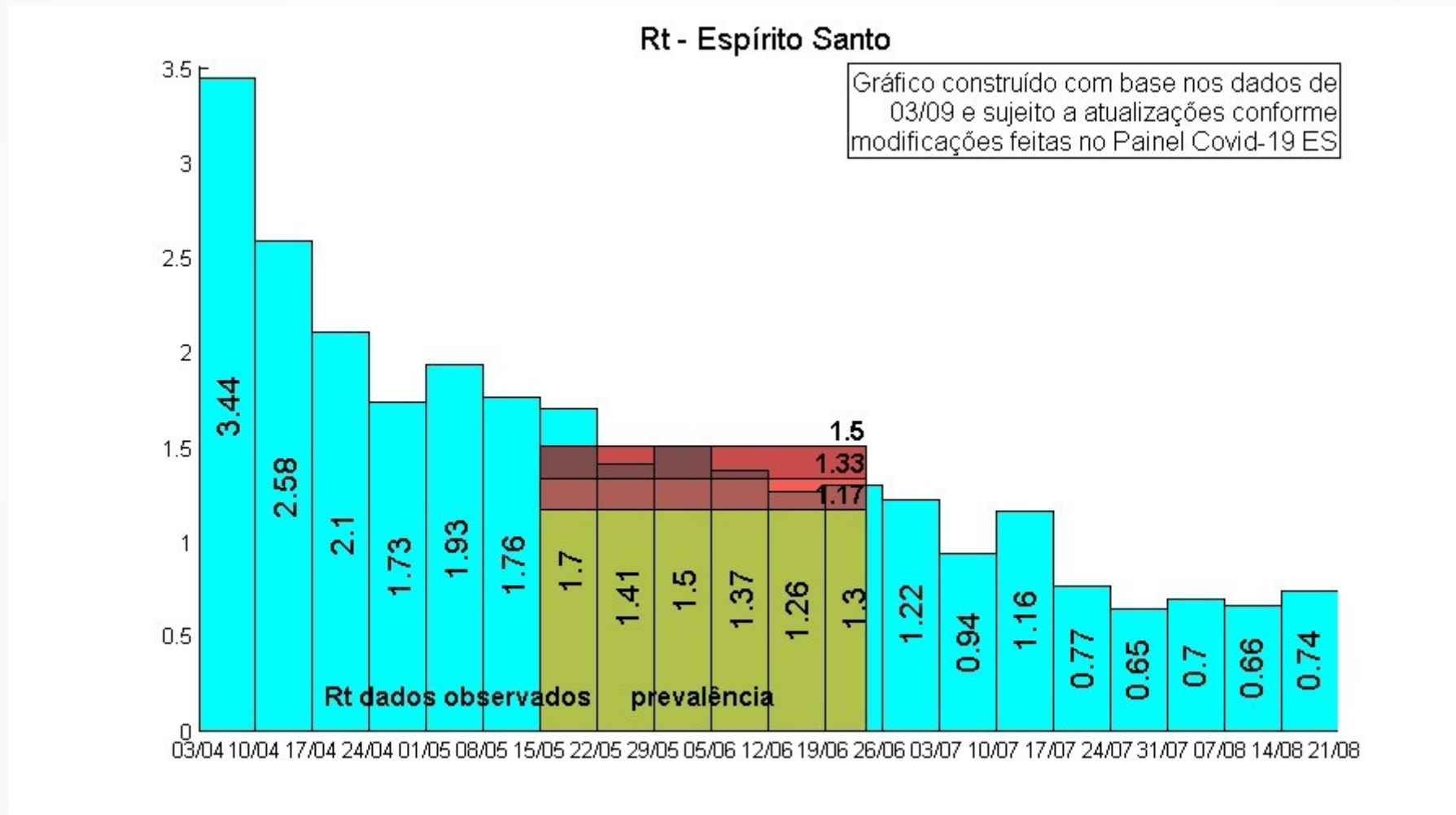


Fonte: SESA

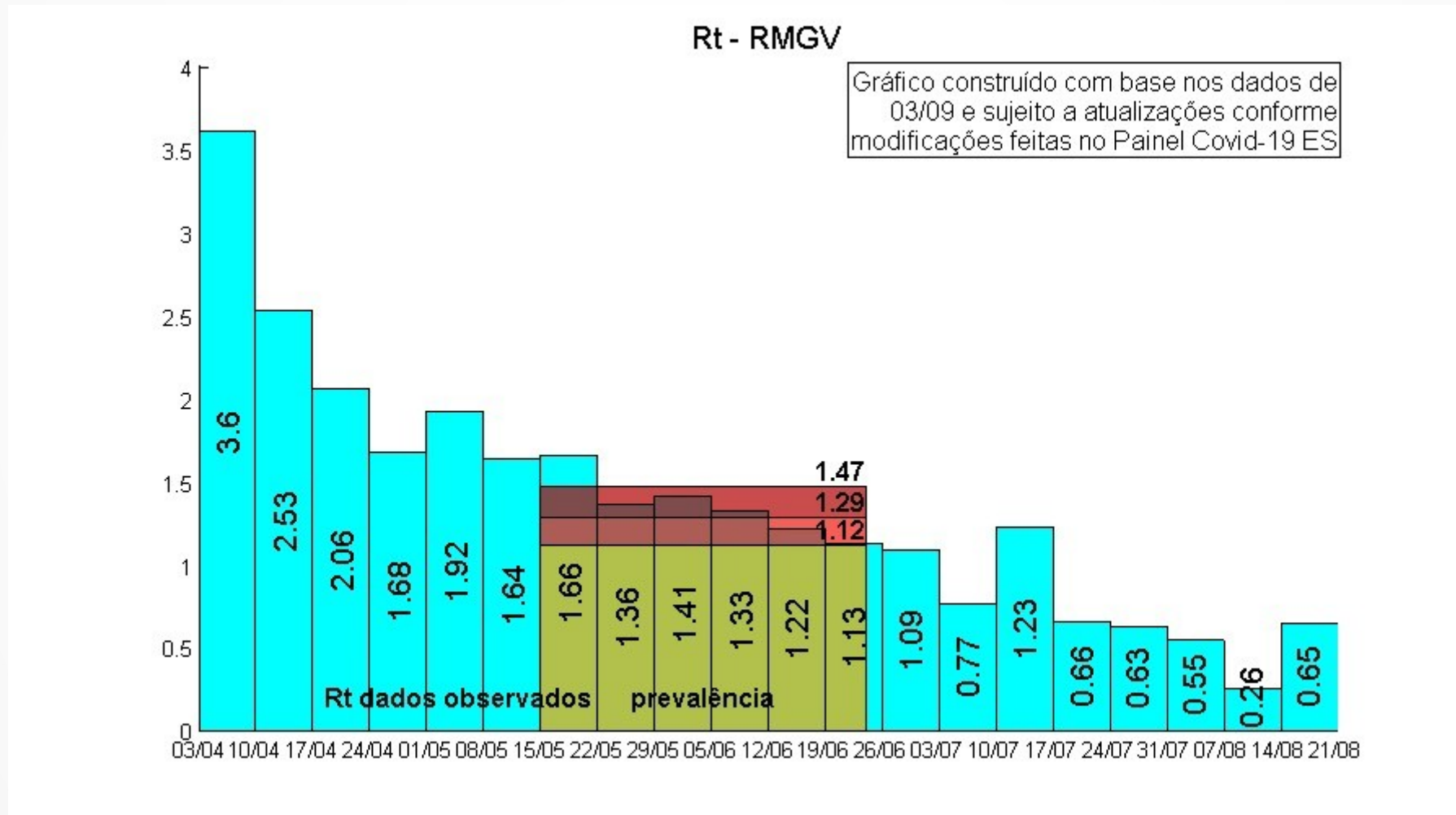
Projeção da óbitos COVID-19 ES até 19/09



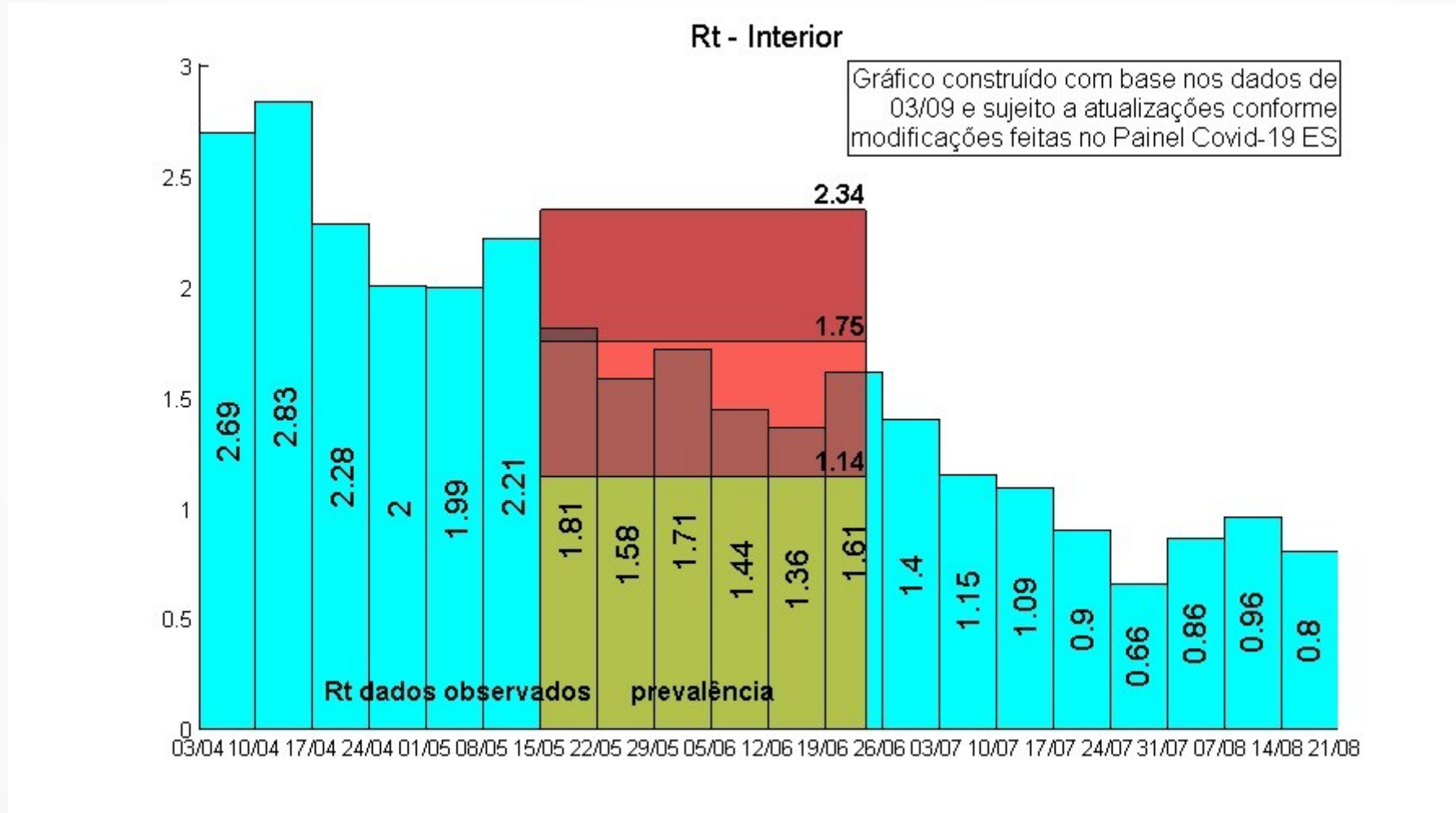
Taxas de Transmissão



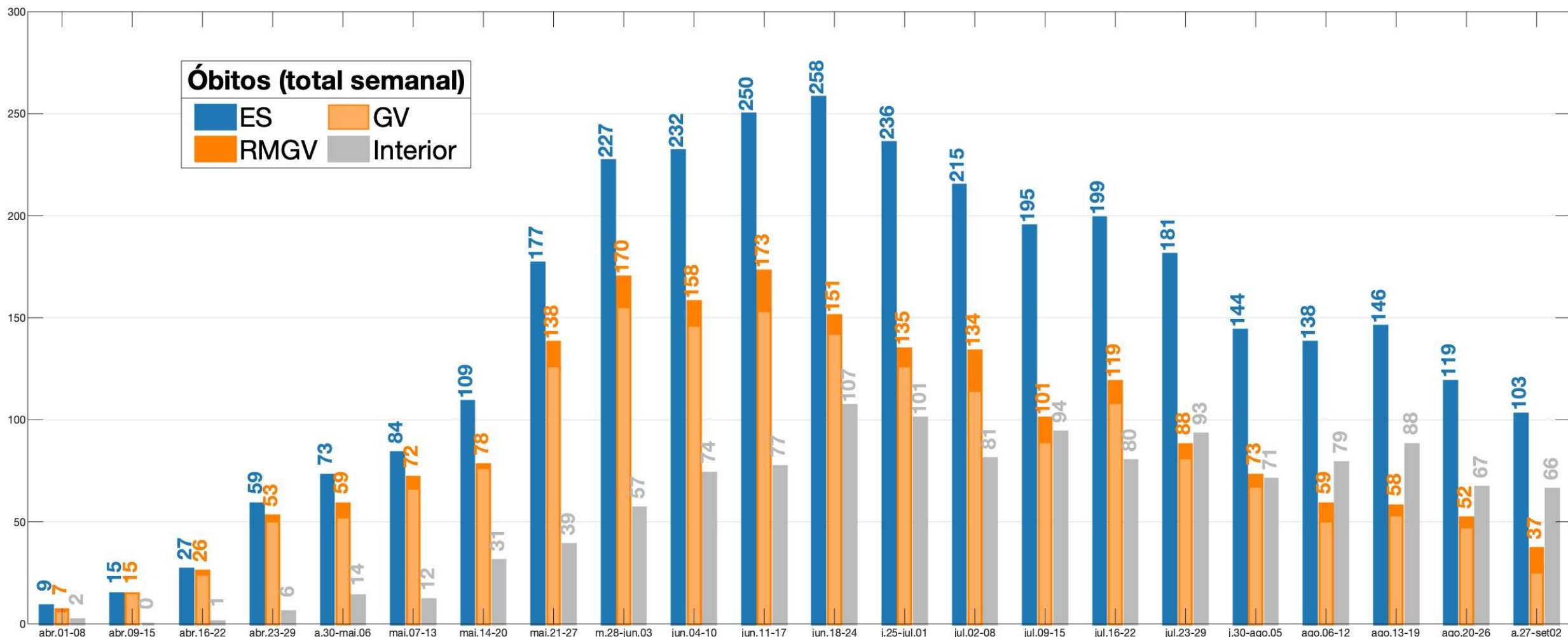
Taxas de Transmissão



Taxas de Transmissão

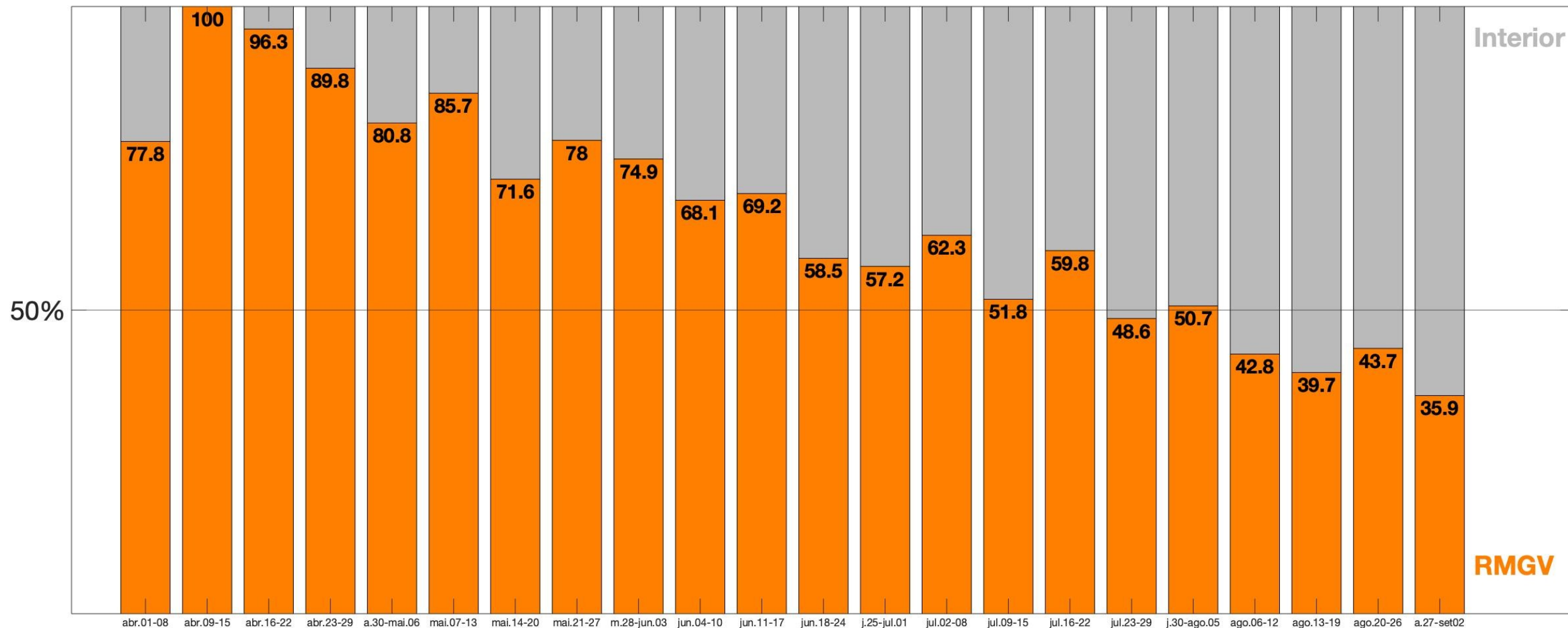
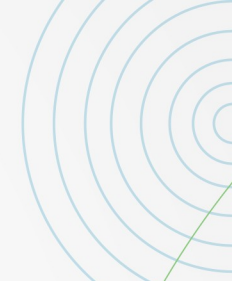


Análises de tendências



Análises de tendências

Percentual de óbitos na RMGV e interior (%)



Análises de tendências

