

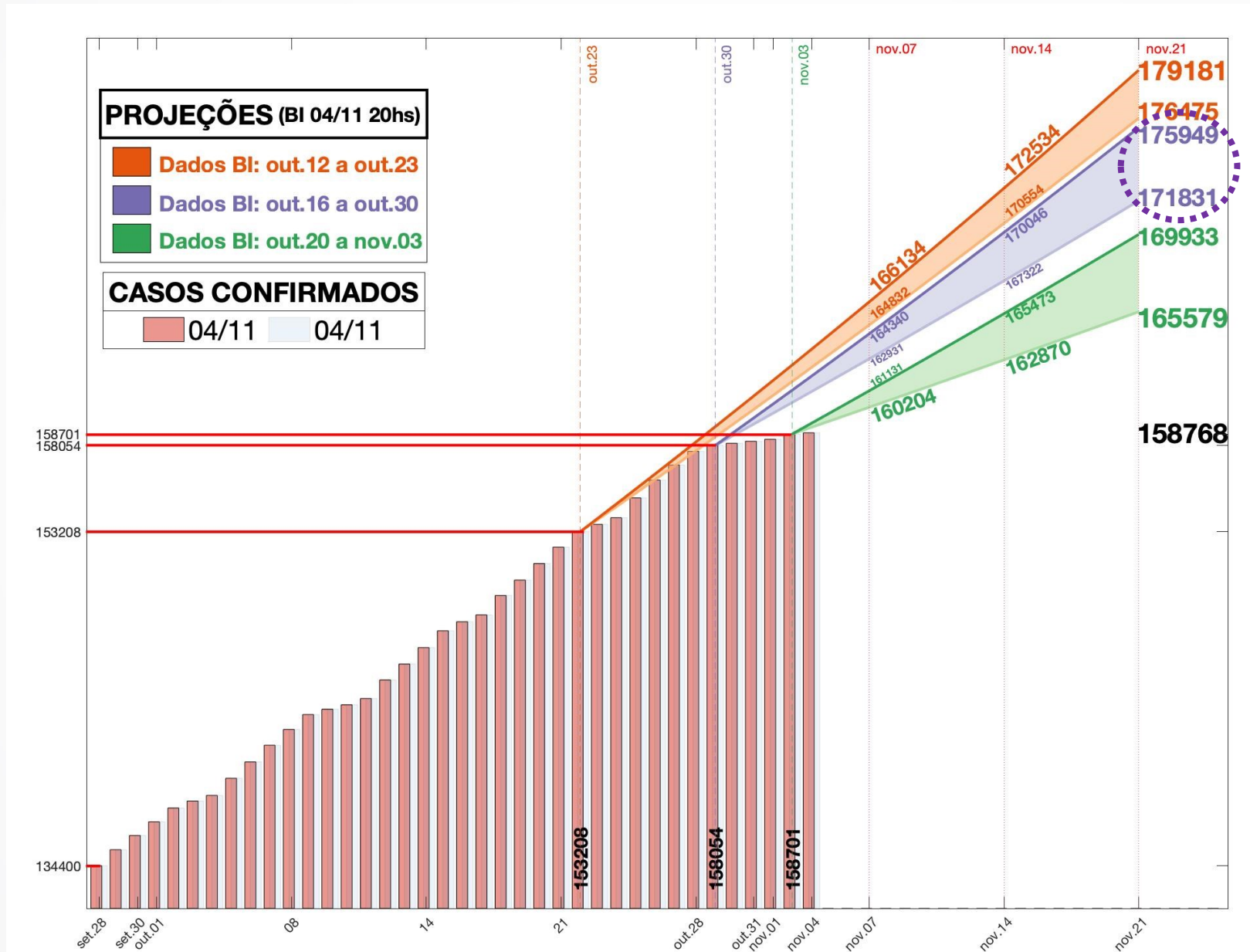
Núcleo Interinstitucional de Estudos Epidemiológicos (NIEE/IJSN)

Resenha: indicadores COVID-19

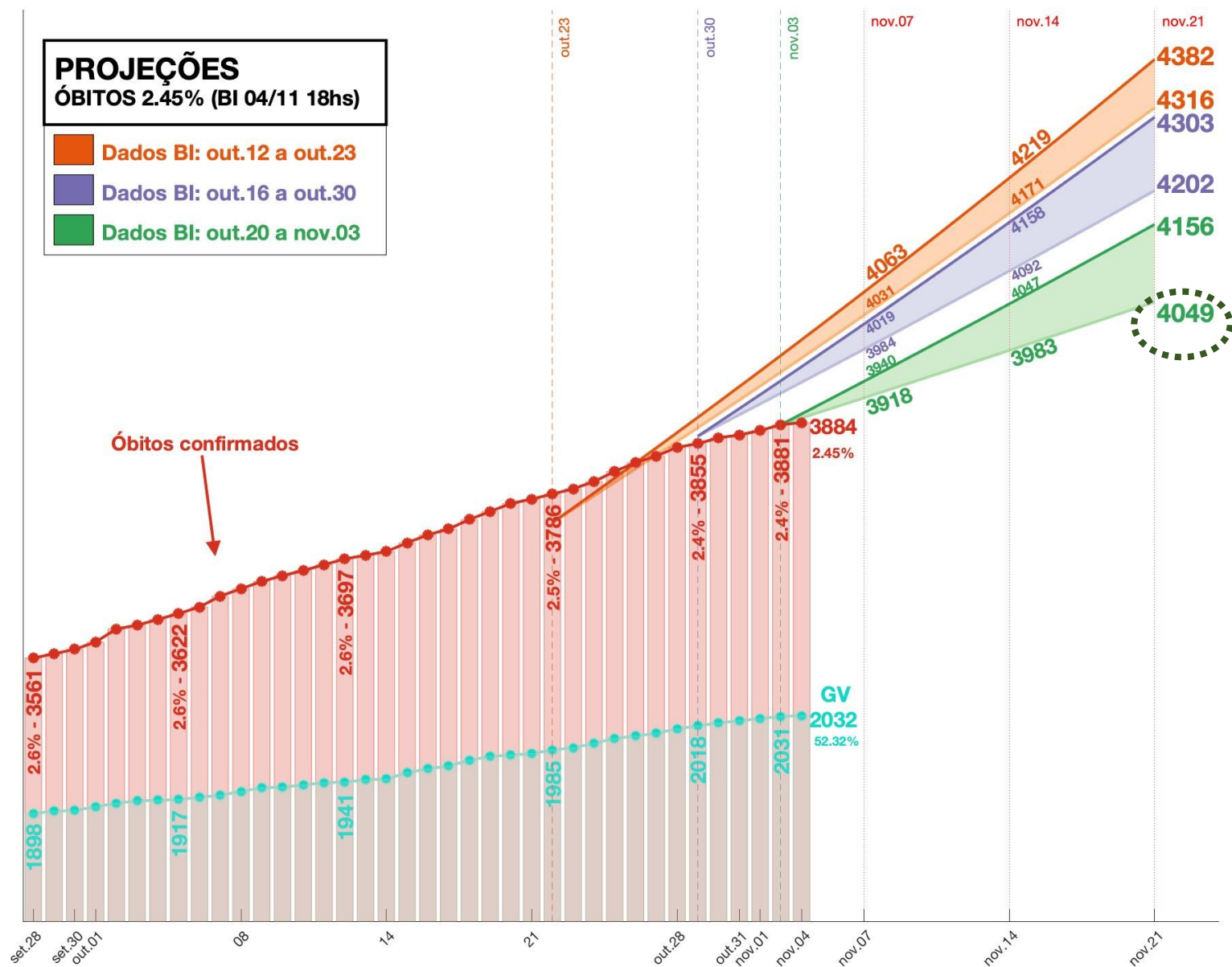
06 de novembro 2020



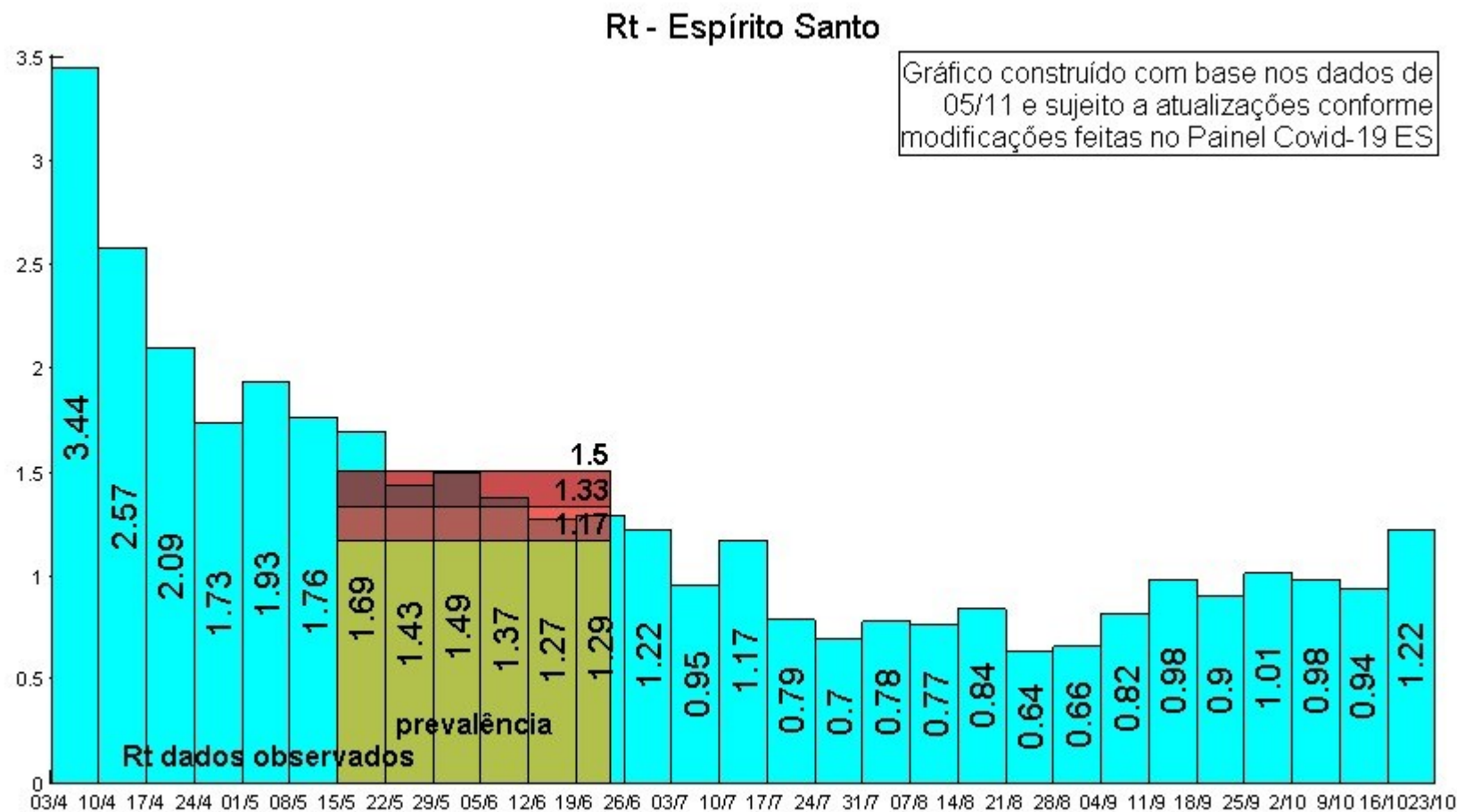
Projeção dos casos COVID-19 Espírito Santo até 21/11



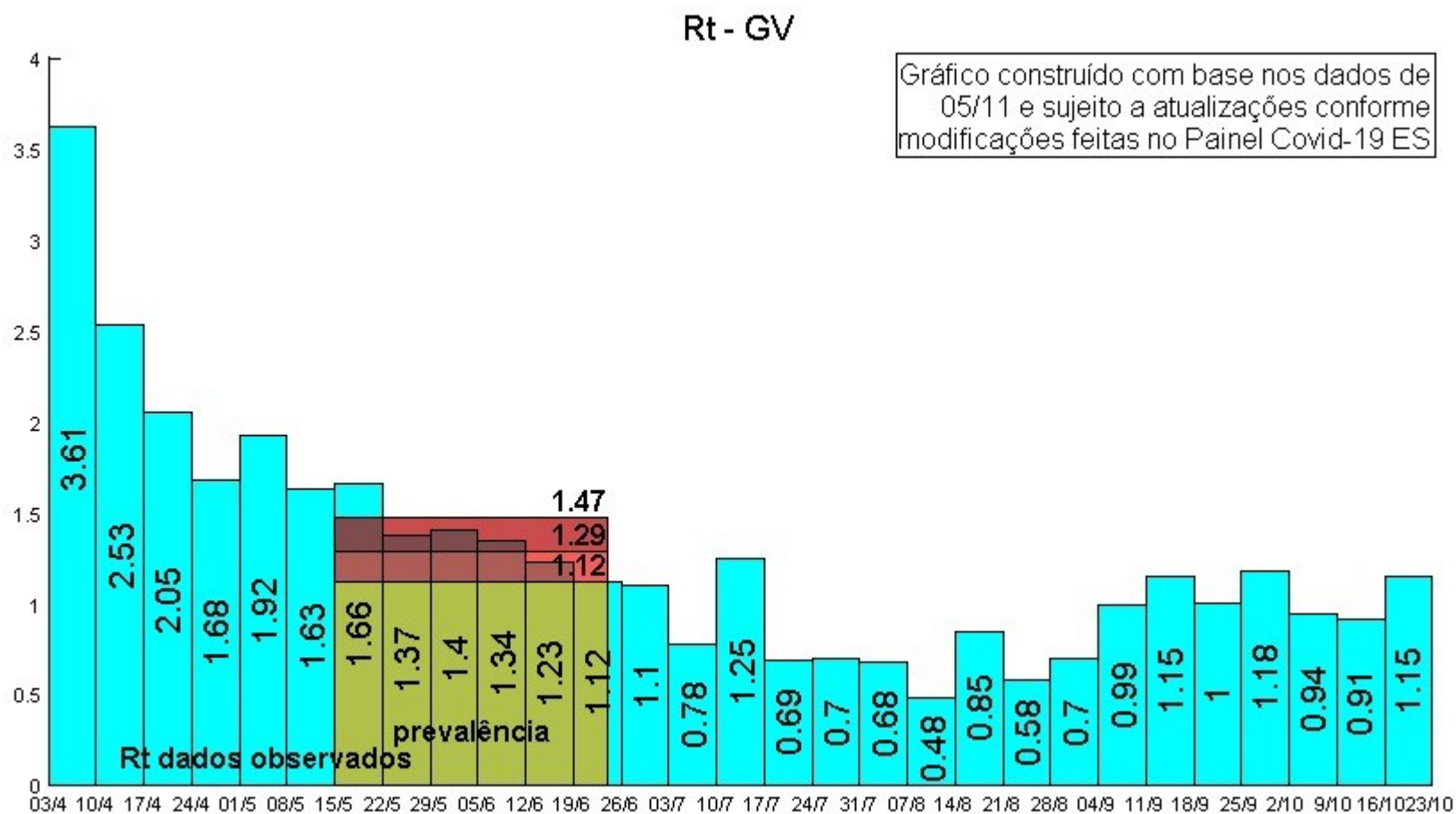
Projeção da óbitos COVID-19 ES até 21/11



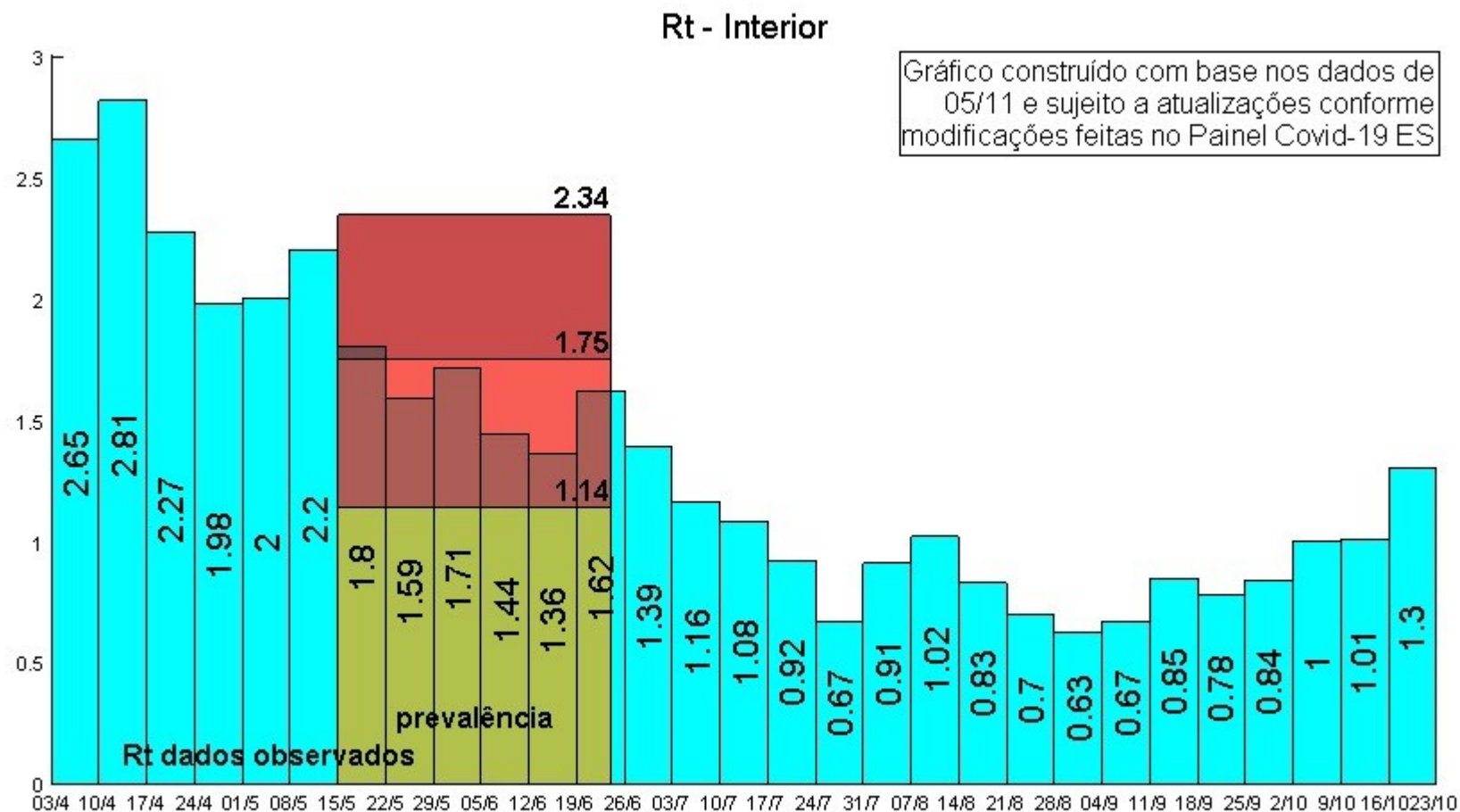
Taxas de Transmissão



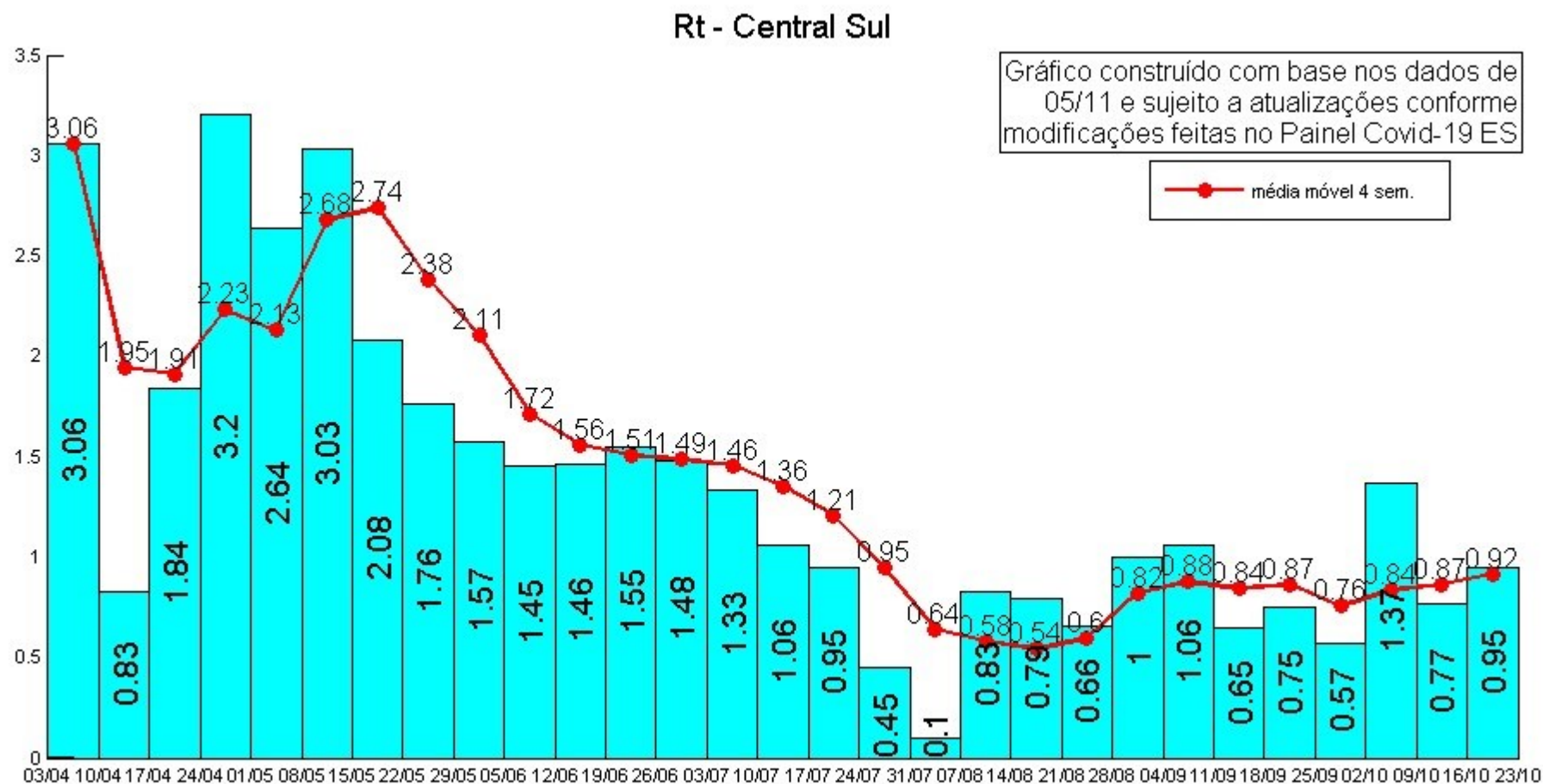
Taxas de Transmissão



Taxas de Transmissão

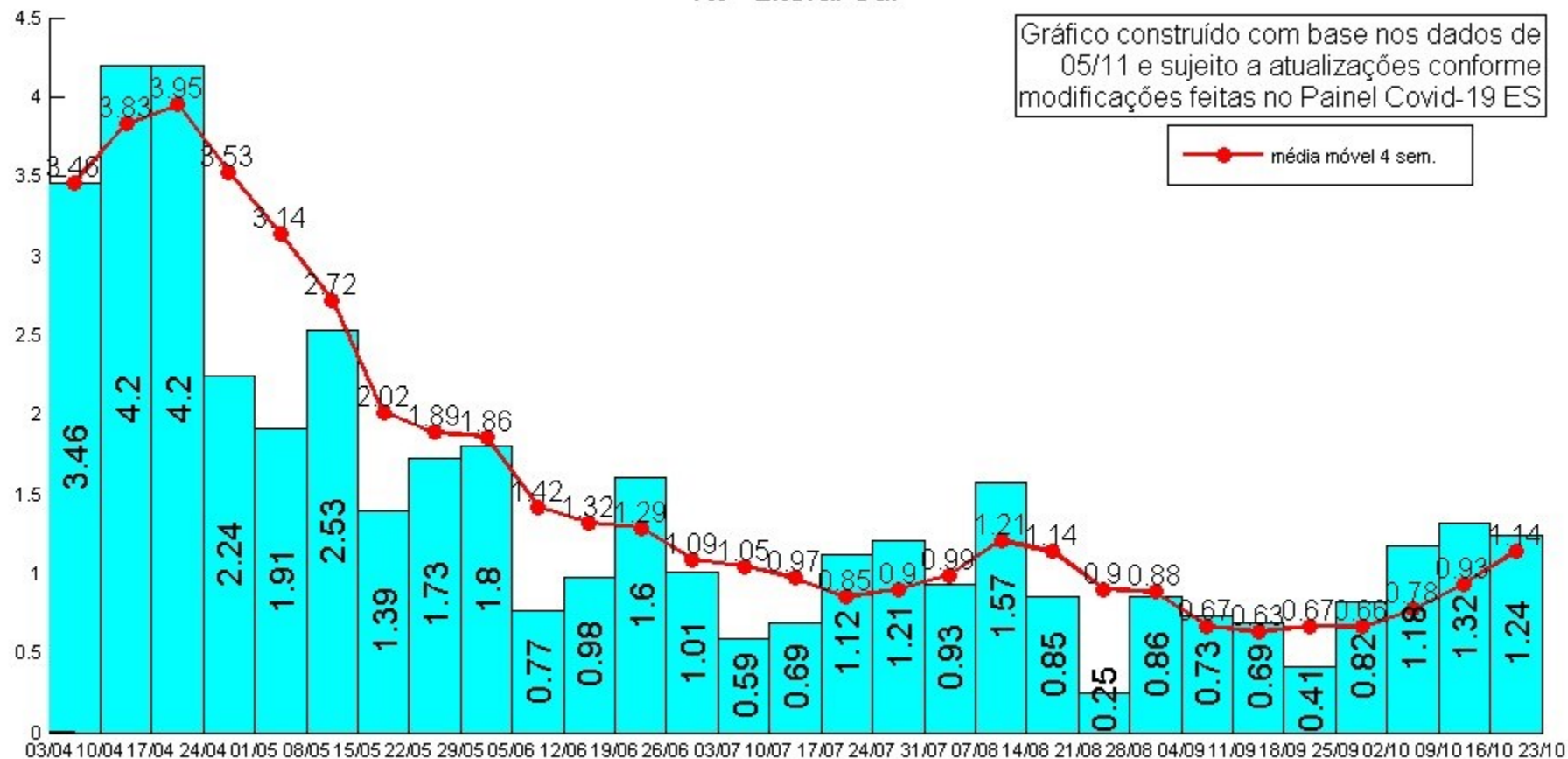


Taxas de Transmissão

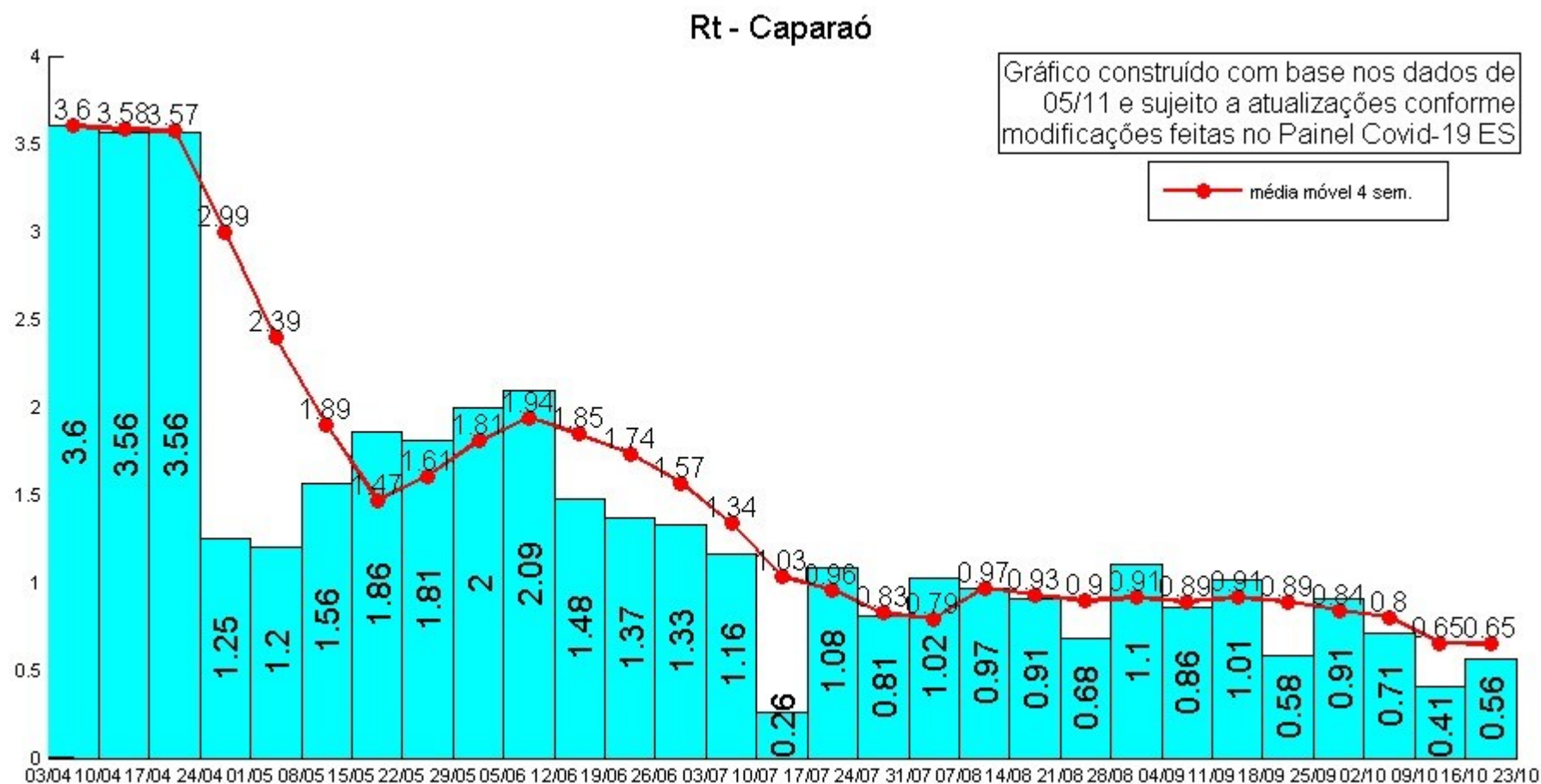


Taxas de Transmissão

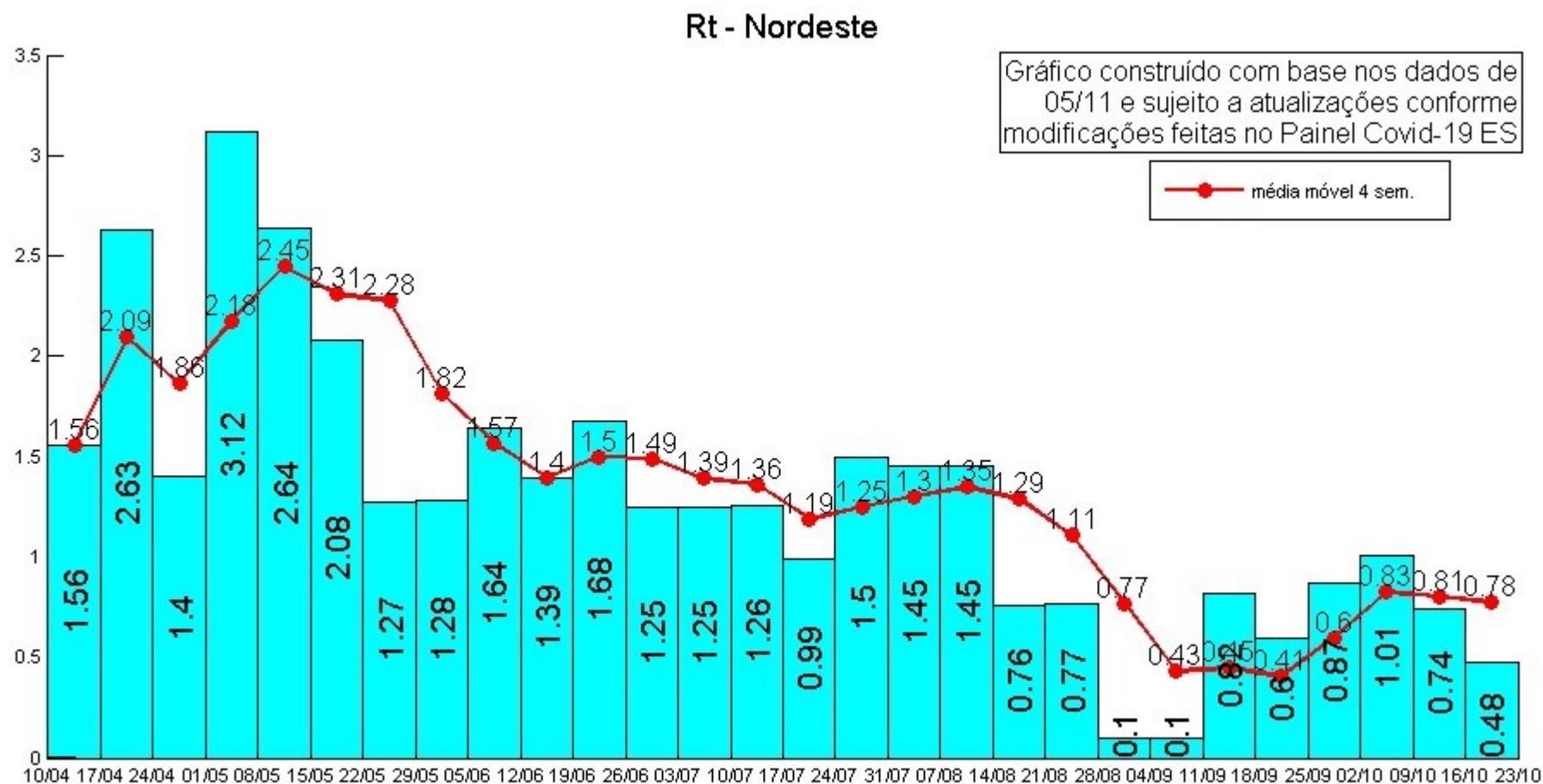
Rt - Litoral Sul



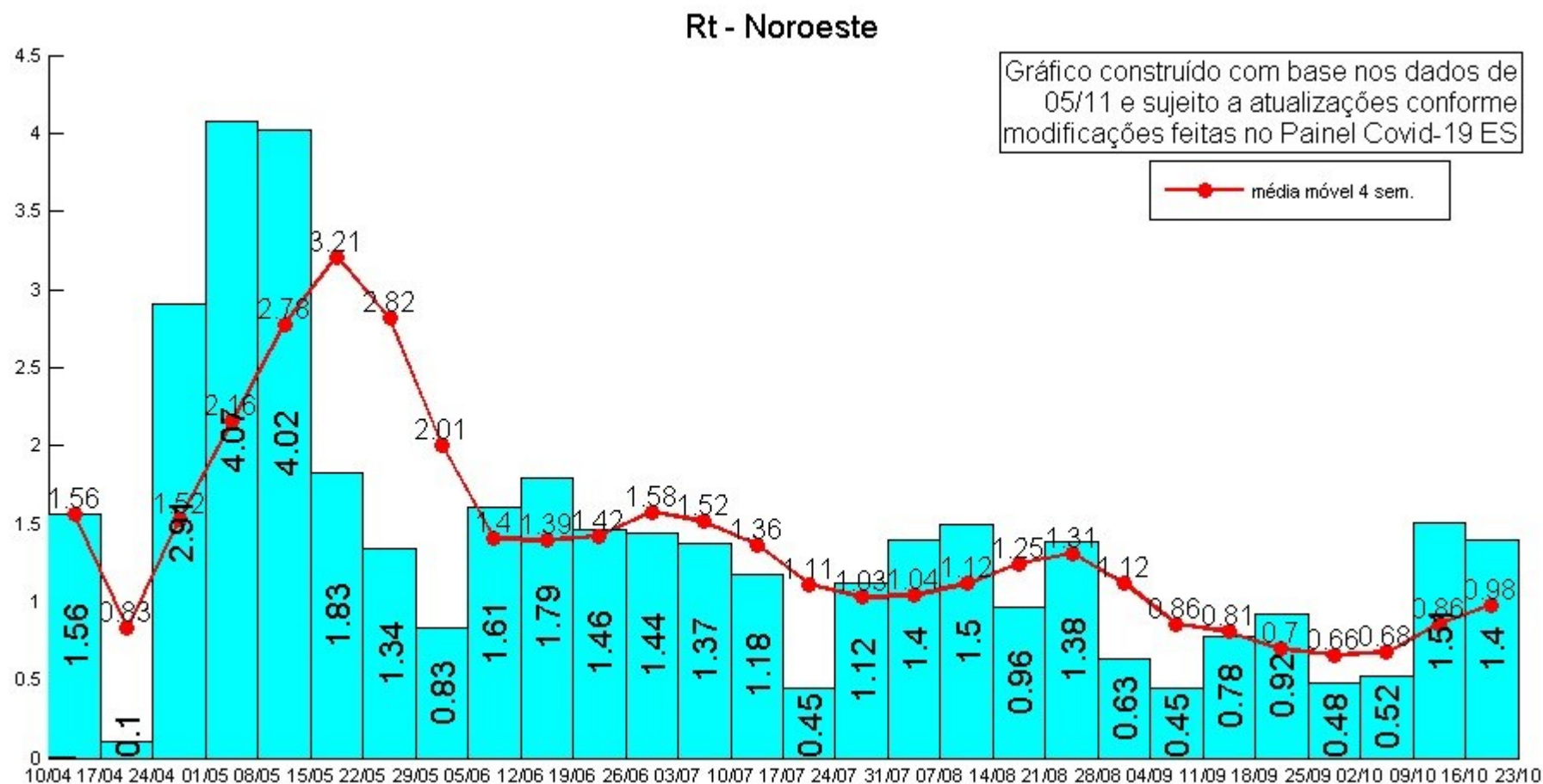
Taxas de Transmissão



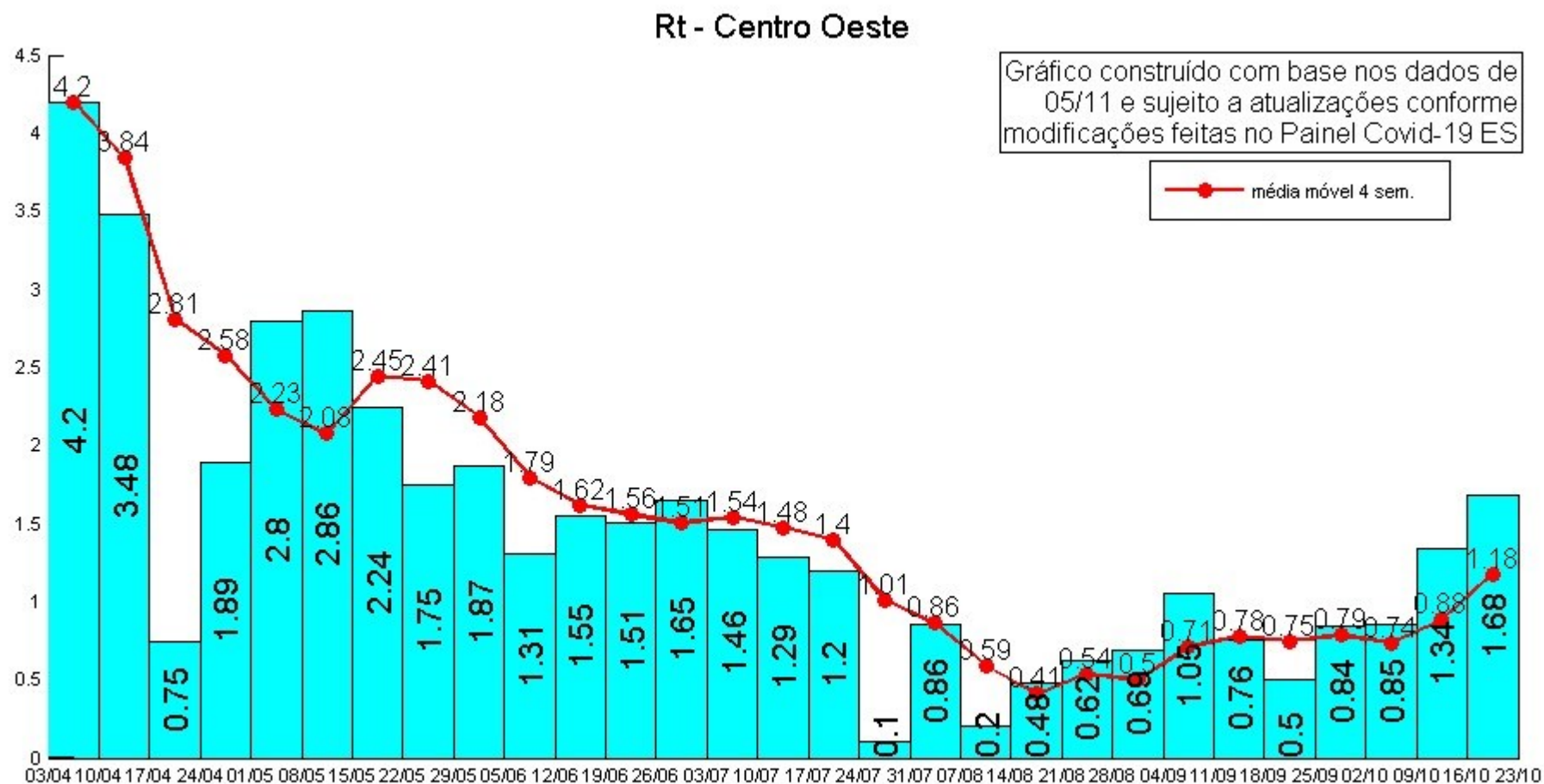
Taxas de Transmissão



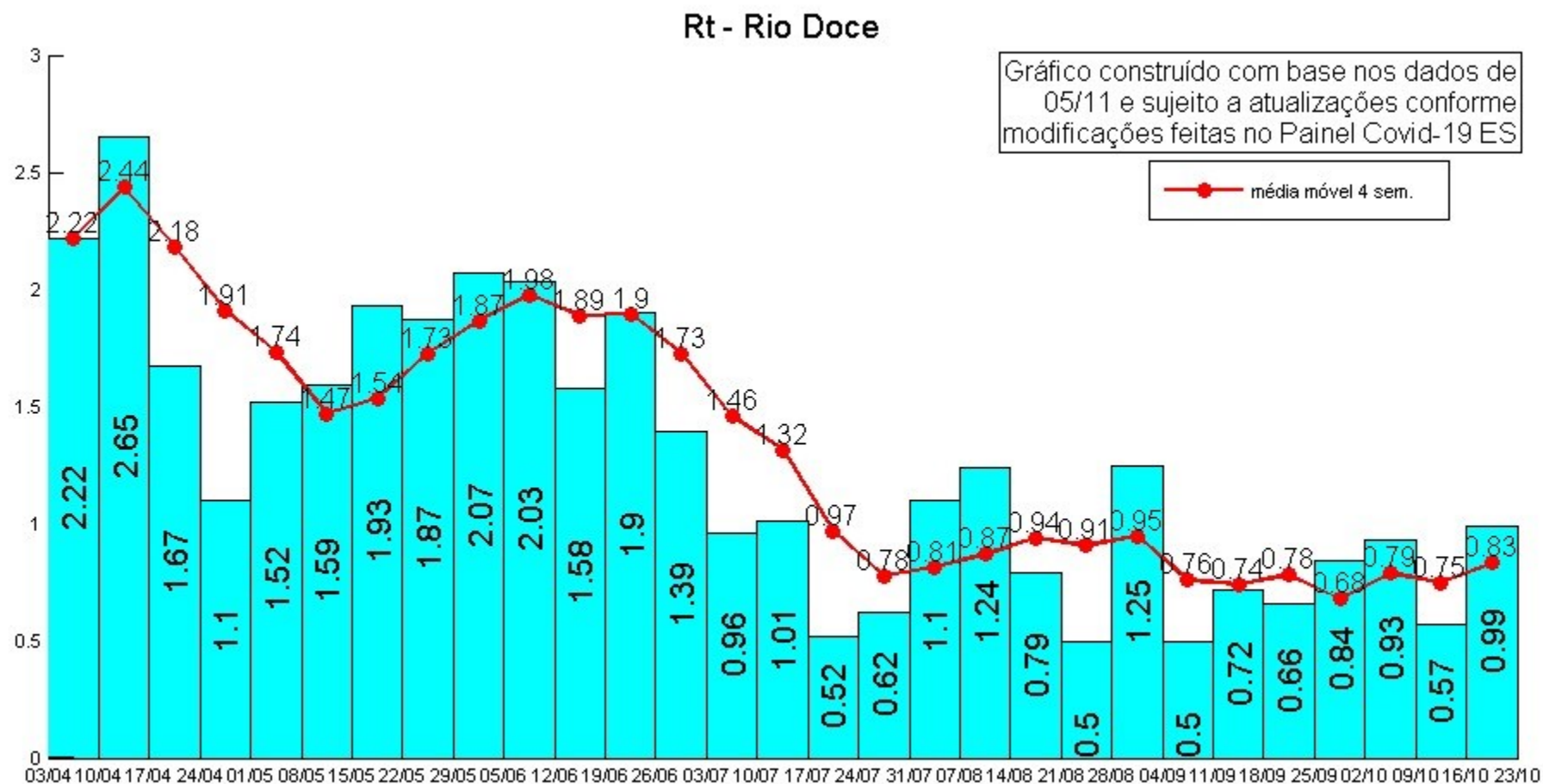
Taxas de Transmissão



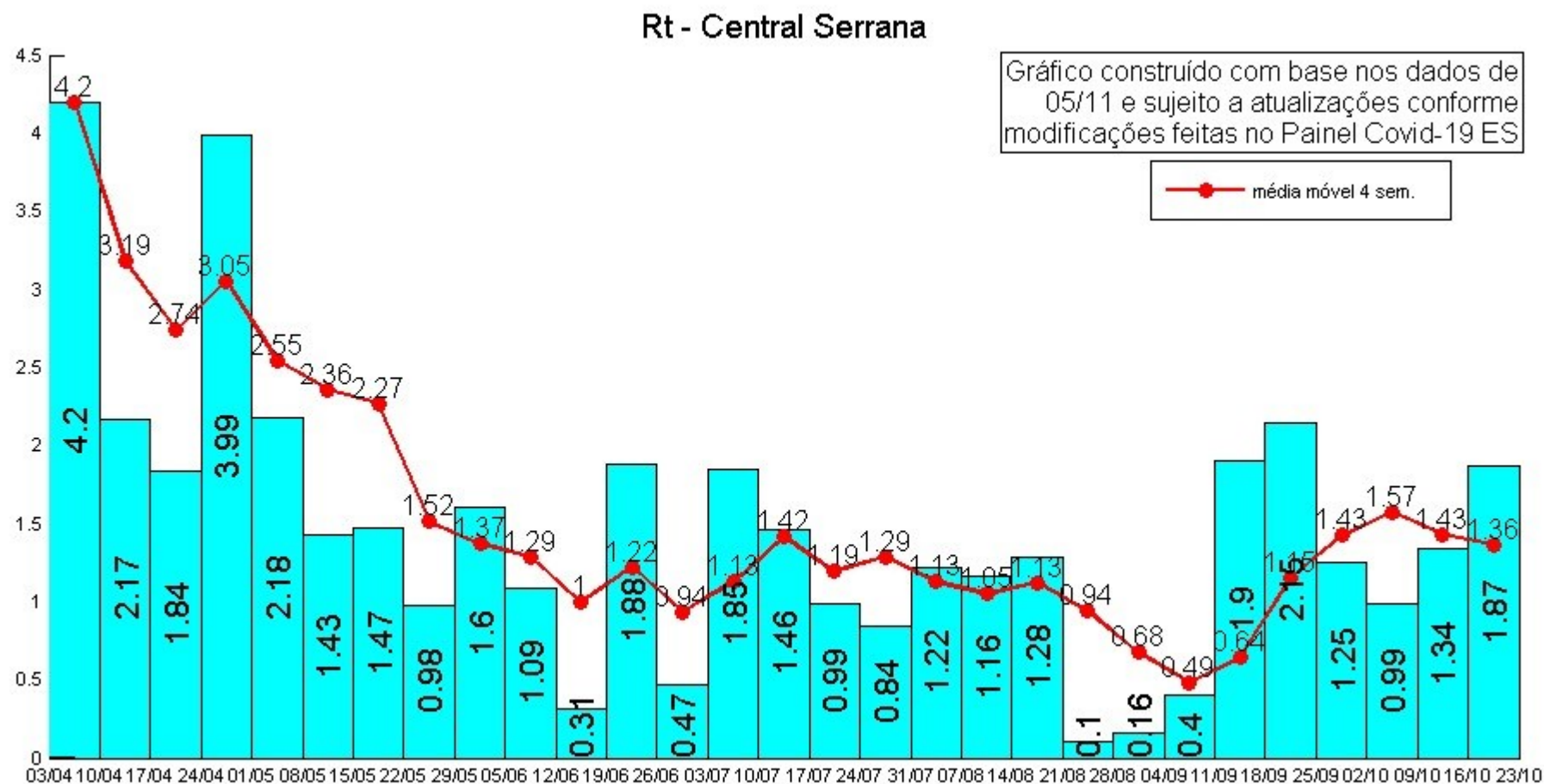
Taxas de Transmissão



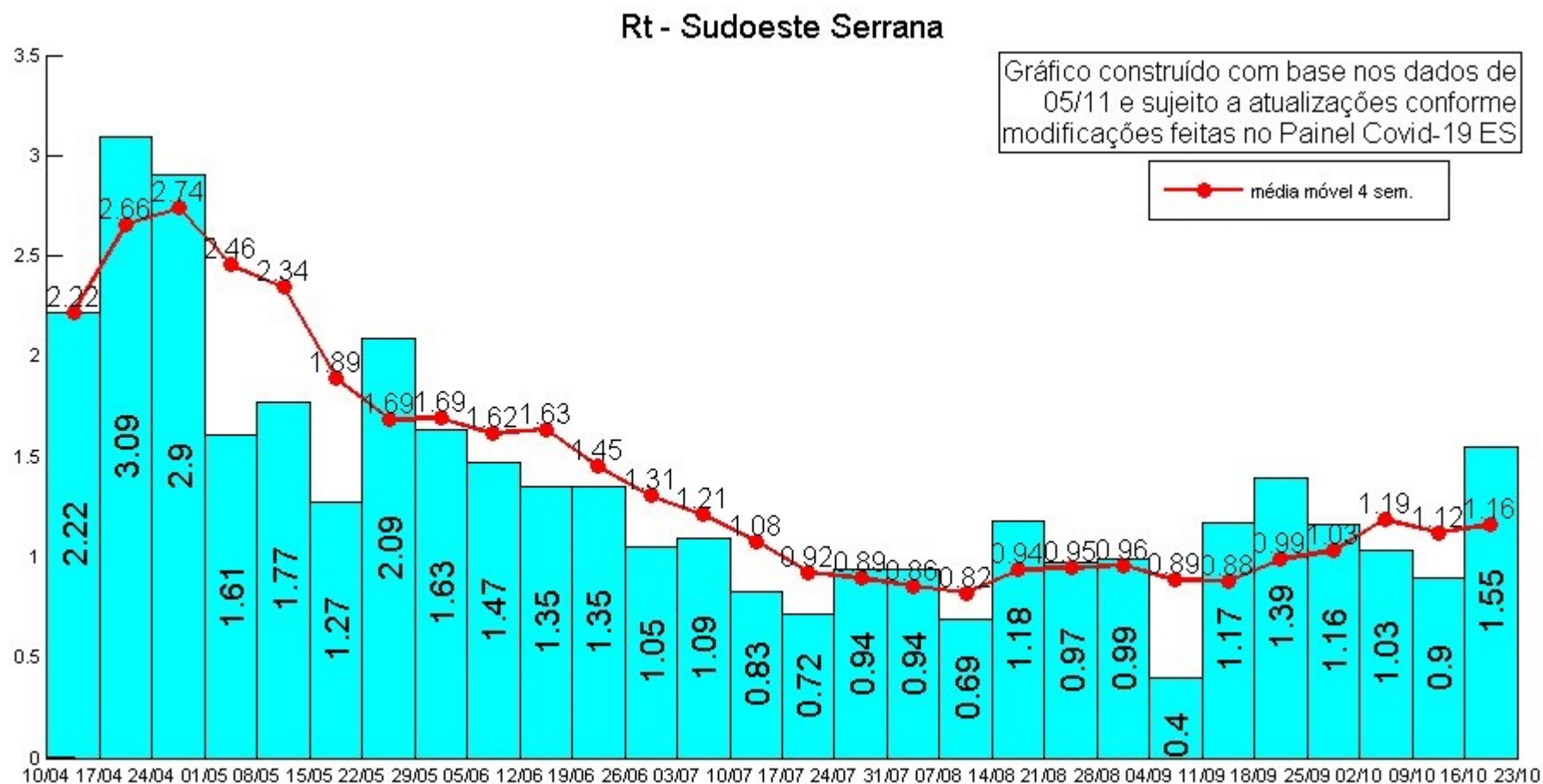
Taxas de Transmissão



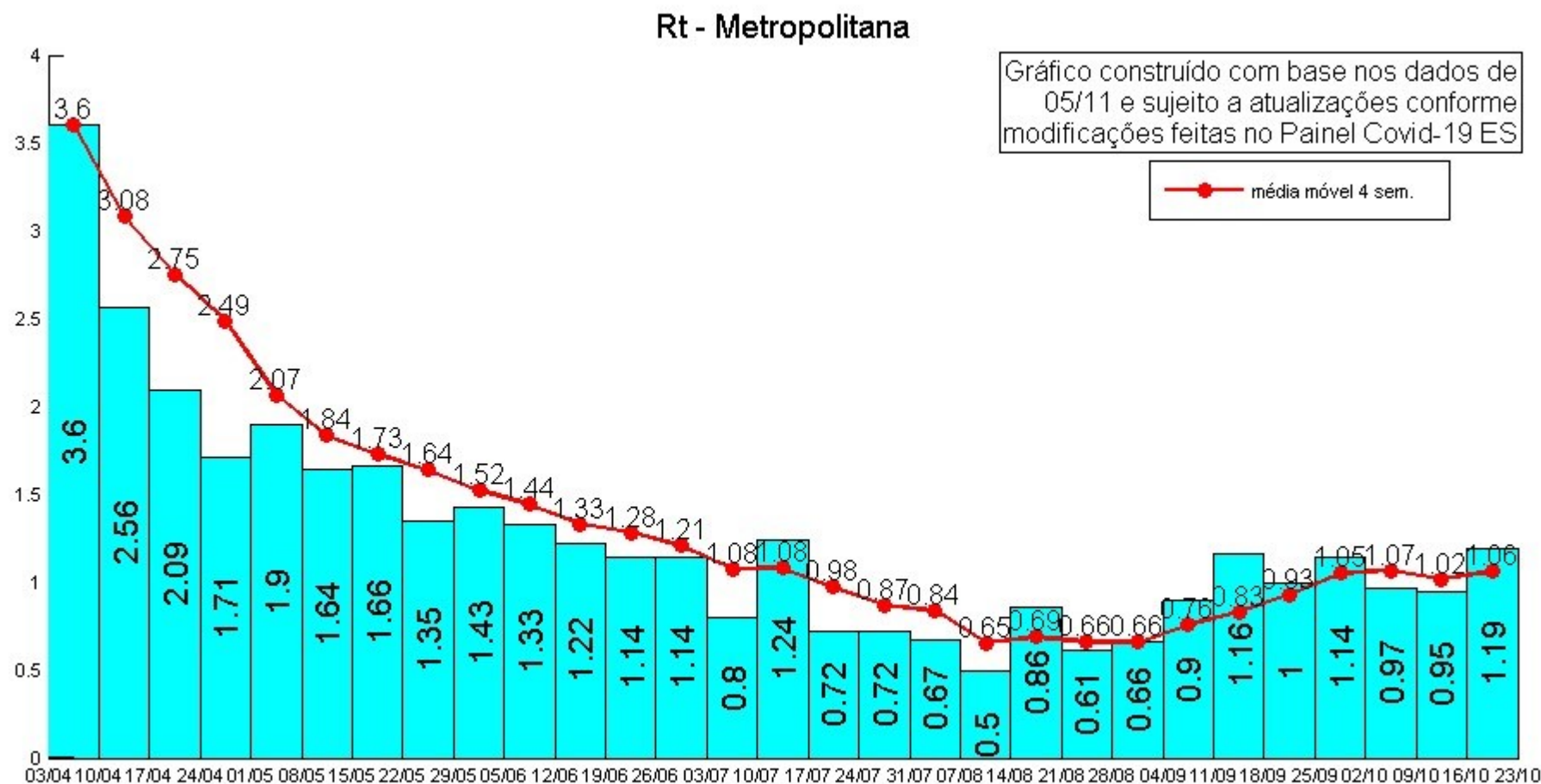
Taxas de Transmissão



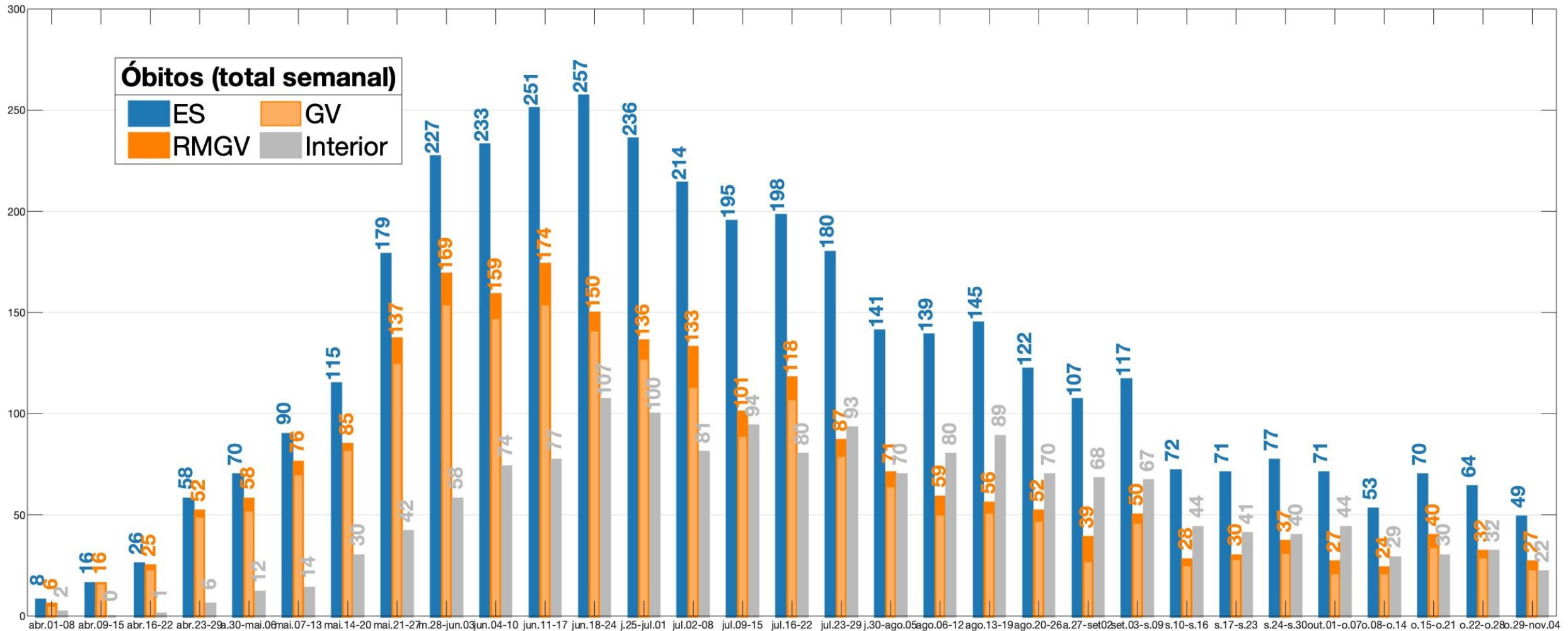
Taxas de Transmissão



Taxas de Transmissão

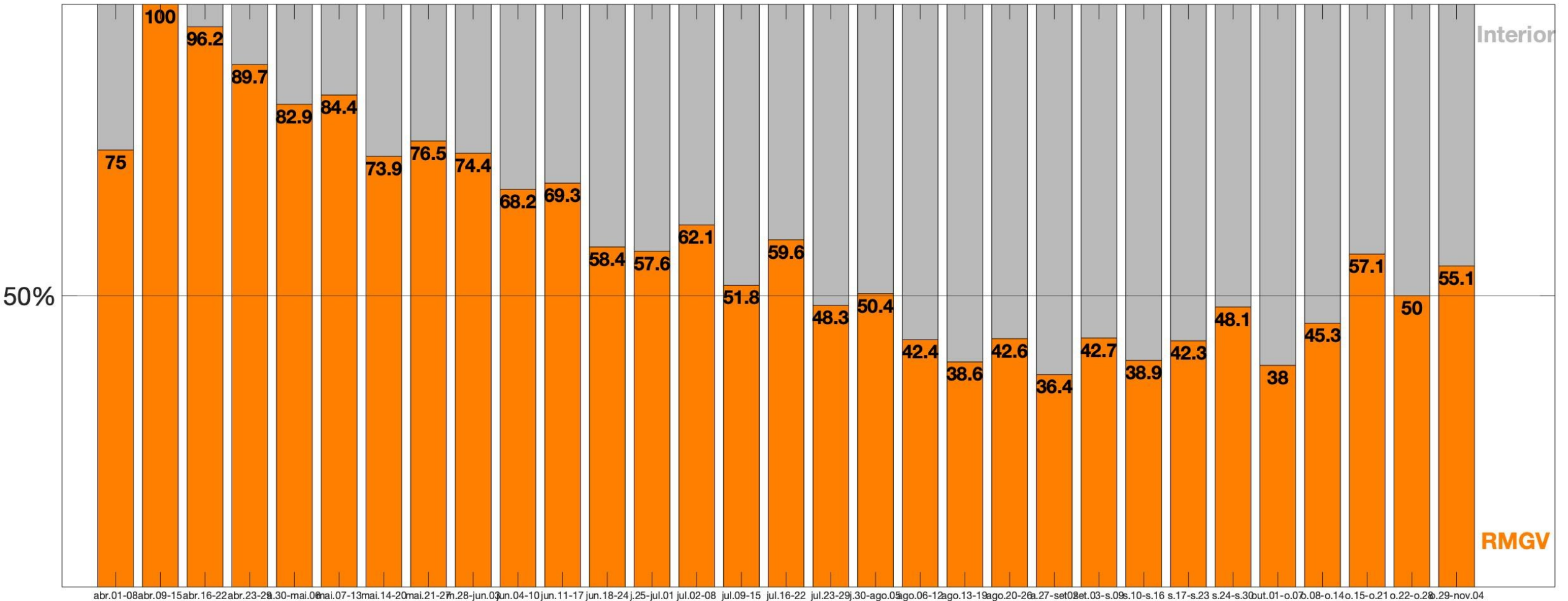
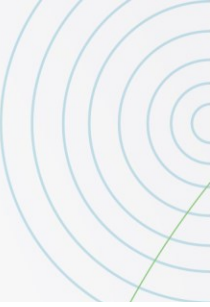


Análises de tendências



Análises de tendências

Percentual de óbitos na RMGV e interior (%)



abr.01-08 abr.09-15 abr.16-22 abr.23-29 maí.01-07 maí.08-13 maí.14-20 maí.21-27 jun.01-07 jun.08-14 jun.15-21 jun.22-28 jul.01-07 jul.08-14 jul.15-21 jul.22-28 ago.01-07 ago.08-14 ago.15-21 ago.22-28 set.01-07 set.08-14 set.15-21 set.22-28 out.01-07 out.08-14 out.15-21 out.22-28 nov.01-07 nov.08-14 nov.15-21 nov.22-28

Análises de tendências

